

E11

hrc nz

Health Research Council
of New Zealand

Te Kaunihera Rangahau Hauora o Aotearoa



Statement of Intent Ko te Tauākī Whāinga

1 July 2023 - 30 June 2027



**Te Kāwanatanga
o Aotearoa**

New Zealand Government

Contents

Ihirangi

Foreword Kupu Whakataki	5
Section 1: About the Health Research Council Wāhanga 1: Mō Te Kaunihera Rangahau Hauora o Aotearoa	6
<ul style="list-style-type: none"> Who we are What we do Governance and organisational capability Funding 	<ul style="list-style-type: none"> 6 6 7 7
Section 2: Our intentions – executive summary Wāhanga 2: Tā mātou e whai nei – He Whakarāpopototanga	8
Section 3: Working within the health research sector Wāhanga 3: Ko te mahi ki roto i te rāngai rangahau hauora	10
Section 4: Supporting government strategies Wāhanga 4: Ko te tautoko i ngā rautaki kāwanatanga	12
Section 5: Our performance framework Wāhanga 5: Ko tā mātou mahere mahi	16
<ul style="list-style-type: none"> At a glance Focus area – People Aronga – Tāngata Focus area – Ideas Aronga – Huatau Focus area – Priorities Aronga – Whakaarotau 	<ul style="list-style-type: none"> 16 17 21 25
Appendix 1: The HRC’s reporting requirements Tāpiringa 1: Ko ngā here ā-pūrongo tā HRC	29
Appendix 2: The New Zealand Health Research Prioritisation Framework Tāpiringa 2: Ko te Mahere o ngā Rangahau Hauora Matua o Aotearoa	30
Appendix 3: The HRC’s functions under the Act Tāpiringa 3: Ko ngā āheinga o HRC i raro i te Ture	31

Foreword

Kupu Whakataki

What makes us particularly proud of our work at the Health Research Council is the continual push for improvement and how we ensure health research plays the most effective and relevant part it can in achieving our country's collective vision for health.

Research doesn't take place in a vacuum – it is part of a wider ecosystem focused on addressing local and global health issues and finding solutions in areas of greatest need. In recent years, the HRC has adapted and aligned its funding mechanisms to realise the vision of the New Zealand Health Research Strategy and fulfil the aims of the New Zealand Health Research Prioritisation Framework, and over the next four years we will implement a host of new initiatives to bring the future goals of the health sector and science system to life.

Changes in our investment framework will reflect this, both in terms of the funding opportunities we offer and the processes that support them. The fundamentals, however, remain the same, which means our work will focus on three key areas: people, ideas, and research priorities. How we invest in each of these can make a genuine difference to health outcomes in Aotearoa New Zealand.

Our investment in excellent researchers is front and centre, and the HRC is committed to making research careers more accessible and providing avenues for career growth and leadership. Alongside the funding opportunities we'll provide across the career spectrum, we will encourage researchers to connect and collaborate with each other, supporting and facilitating a multi-disciplinary research response that is required to address complex health, wellbeing, and equity issues. For research to have its greatest reach and impact, these connections should extend to the next users and end-users of research, such as industry, consumers, communities, healthcare providers, non-government organisations and policy-makers.

One of the new ways in which we'll foster collaboration is through our targeted investment

in priority research areas, which will in some cases bring together the skillset and expertise of different researchers to work on larger projects with potentially greater impact. The first priority-driven initiative for 2023 will focus on climate change and its impacts on health and wellbeing, where we'll aim to galvanise cross-sector support to address and mitigate this urgent threat.

We believe that excellent health services begin with great ideas and the building of knowledge. The HRC looks forward to building strong relationships with Te Whatu Ora, Te Aka Whai Ora, and continuing our work with Manatū Hauora to explore how HRC funding opportunities can better deliver research to inform the delivery of healthcare. By supporting healthcare professionals to carry out research, we help bridge the gap between research findings and health practice and ensure quality evidence underpins health treatments and services in Aotearoa New Zealand.

Across all our investment mechanisms, the HRC will continue to pursue health equity. We will be aligning the HRC's systems and processes with our commitment to Te Tiriti o Waitangi, so that the intent of partnership between the Crown and Māori is built-in at a systemic level.

We are all excited for this productive and progressive term ahead, and the opportunity to support the people and ideas that will make a meaningful difference in our country and beyond.




Professor Lester Levy,
 CNZM, Chair




Suzanne Pitama, Chair,
 Māori Health Committee

Section 1 | Wāhanga 1:

About the Health Research Council

Mō Te Kaunihera Rangahau Hauora o Aotearoa

Who we are

The Health Research Council of New Zealand (HRC) is the government agency dedicated to funding and furthering health research. We identify and fund high-impact research across all disciplines, investing around \$120 million a year in research to answer New Zealanders' health needs.

We're also responsible for supporting and sustaining the talented research workforce that will seek and find solutions to the complex health challenges facing us now and into the future.

The HRC acknowledges Māori as tāngata whenua of Aotearoa. As a Crown agency we strive to uphold the principles of Te Tiriti o Waitangi across all our investments, policies and systems. We believe a health research system that is fit for Aotearoa New Zealand must recognise and support mātauranga Māori and kaupapa Māori methodologies, and actively engage iwi, hapū and Māori communities in the research process.

Across our broad portfolio of research, we aim to foster excellence; drive innovation and impact; advance Māori health; and pursue health equity. We're proud to contribute to evidence-based interventions that support those who experience unfair and unjust health outcomes, because reducing inequities can benefit society as a whole. Our mandate, as set out in the Health Research Council Act 1990, is to:

1. advise our ministers on national health research policy
2. initiate and support health research, particularly into high-priority issues and areas

3. foster the recruitment, training, and retention of health researchers in New Zealand
4. negotiate and administer funding for health research
5. promote and disseminate the results of health research
6. maintain a safe and ethical health research environment, including ensuring the safety of large clinical trials.

A review of the HRC Act* is currently under consideration which could result in changes to the legislative structure and functions of the Health Research Council.

**See the HRC's functions under the current Act in Appendix 3.*

What we do

Guided by government's vision and goals, we design research funding opportunities that will maximise Aotearoa New Zealand's research potential, ensuring the best ideas get off the ground and have a chance of making a real-world difference. We support researcher-initiated proposals – from activation stage through to full-stage research projects. We also initiate and commission research in priority areas where knowledge gaps and critical evidence needs exist, working across sectors to address the disparate determinants of health (including social, environmental and economic factors).

Having led the development of the New Zealand Health Research Prioritisation Framework, we are responsible for aligning our investment with this framework and supporting the many stakeholders that are required to implement it.

Building a skilled workforce, which represents the diverse populations we serve, is pivotal to building the knowledge and solutions that Aotearoa New Zealand needs. We do this by providing funding opportunities for researchers at various stages of their careers, including dedicated opportunities for Māori and Pacific health researchers.

To support evidence-based healthcare, we are committed to engaging more healthcare professionals in research, with the aim of bridging the gap between research findings and research practice. Our opportunities for health professionals allow them to gain research training, advance an established research career, or develop health policy.

The HRC manages a fair, transparent and equitable investment process involving multiple committees and typically more than 1500 national and international reviewers a year. Through a series of strategic levers, from the design of funding rounds through to our priority-aligned assessment criteria, we ensure Aotearoa New Zealand's limited health research dollars go to the proposals with the greatest potential for impact.

Ensuring health research is ethical and safe is pivotal to a world-leading Research, Science and Innovation (RSI) system. The HRC Ethics Committee accredits all the Health and Disability ethics committees and Institutional ethics committees in Aotearoa New Zealand, and our regulatory committees monitor the safety of innovations involving gene technologies and clinical trials involving new medicines.

Governance and organisational capability

The Minister of Health is responsible for the HRC and appoints our 10-member governing Council.

Staff members work collaboratively to ensure all HRC initiatives benefit from the expertise spread across our organisation. Our investment decisions are guided by independent peer review and expert assessing committees within a robustly managed

process; and the HRC's advisory committees follow policies and protocols that safeguard integrity and transparency in making funding recommendations.

The HRC's Māori Health Committee is a statutory committee established under the HRC Act 1990, and for the past three decades has been responsible for making funding recommendations to Council concerning Māori health research and career development. Now, under a new Te Tiriti o Waitangi-based partnership model, the Māori Health Committee will have greater opportunity for ownership and self-determination over the design of Māori health research funding rounds, and it will work formally with Council on areas of shared concern, such as agreeing on strategic priorities for the HRC annually.

Funding

Vote Health provides the funding for the ethics and regulatory functions that the HRC performs. All other funding for the HRC is appropriated through Vote Business, Science and Innovation, which is administered by the Minister of Research, Science and Innovation. This means that the Minister of Research, Science and Innovation has the responsibility for monitoring HRC's funding allocation, to ensure it is in line with appropriation requirements and the broader strategies and priorities set for the Aotearoa New Zealand health research and science and innovation sectors.

Additionally, the minister devolves Vote funding to the HRC for international research initiatives (from the Catalyst Fund) and for furthering the goals of Vision Mātauranga (from the Vision Mātauranga Capability Fund). The HRC's investment of these devolved funds is subject to the policies developed by the Ministry of Business, Innovation and Employment (MBIE).

Appendix 1 provides a list of the reports that the HRC regularly produces to comply with requirements from both ministers, as well as our obligations under the Crown Entities Act. In addition to these reports, our ministers expect that the HRC will inform them of any issue that is likely to represent a potential risk to the government, as soon as it is possible to do so.

Our intentions - executive summary

Tā mātou e whai nei – He Whakarāpopototanga

Our aspiration for health research in Aotearoa New Zealand

Our aspiration is that every New Zealander will benefit from an equitable world-leading health research system that contributes to positive health and wellbeing outcomes.

This vision envelops the aims of the New Zealand Health Research Strategy and government goals for the Research, Science and Innovation system.

Our contribution and the difference we can make

We have a lead role in the health research sector, developing a skilled and diverse workforce and investing in excellent research to improve wellbeing and health equity.

To bring us closer to our aspiration, we ensure government funds are invested in the most impactful and innovative research designed to meet New Zealanders' needs and complex health challenges.

Our aims in brief

Invest in developing excellent health researchers.

We will attract and support a skilled, diverse and inclusive health research workforce, and address the barriers to access and advancement experienced by researchers. We will implement mechanisms and strategies to improve career stability, which will include funding opportunities for researchers across the career spectrum. With dedicated funding for Māori and Pacific researchers, healthcare professionals and clinical researchers, we will further develop a research workforce capable of meeting local, global, and future health needs.

Invest in health research that is excellent, innovative and impactful.

We will identify and fund excellent, innovative and impactful investigator-initiated health research, from novel and potentially transformative research through to very applied research that changes policy and practice. With dedicated funding for Māori and Pacific health research, we will enable and enhance Indigenous knowledge, methodologies and worldviews. And we will incentivise researchers to engage and collaborate with agencies, government and end-users, to help move research findings into the real world and maximise the impact of health research.

Invest in priority health research gaps, needs and opportunities.

We will provide targeted funding for priority health issues and facilitate a collaborative and connected approach to research. We will identify research gaps and respond to government-set national research priorities, ensuring all our initiatives are centred in equity and aligned with the attributes of the New Zealand Health Research Prioritisation Framework. And we will provide long-term stable funding for independent research organisations and research programmes that help grow capability and expertise in high-priority areas.



Section 3 | Wāhanga 3:

Working within the health research sector

Ko te mahi ki roto i te rāngai rangahau hauora

The HRC makes a significant contribution to the national health research effort. We provide leadership, coordination and connection, and partner with those who share mutual goals, including ministries, non-government and philanthropic organisations. With our robust processes and large international pool of scientific expertise and reviewers, we can add value and efficiencies to funding calls.

The HRC works particularly closely with Manatū Hauora and MBIE, advising and reporting to them on all HRC matters, processes and strategies, while implementing joint initiatives and government goals. We also maintain a close dialogue with other national and international funders and the large and diverse research community that makes up our health research ecosystem.

Supporting ministry-led research efforts

Government ministries frequently invest directly in health-related research. This includes Manatū Hauora, the Ministry of Social Development, the Ministry of Justice, and the Ministry for the Environment. MBIE also makes contestable and negotiated science investments in the realm of health: it funds and monitors the National Science Challenges and a number of Crown Research Institutes (CRIs) focused on the environment, climate, food production and agriculture, all of which are linked to the health research effort. MBIE also monitors and funds the Marsden Fund which is focused on fundamental health research and administered by the Royal Society Te Apārangi.

The HRC works with ministries to address cross-sectoral issues by pooling resources in joint funding calls. We have also worked closely with Crown entities monitored by MBIE, such as the Accident Compensation Corporation (ACC) and Callaghan Innovation. Recent initiatives have included:

- an HRC and Manatū Hauora collaboration to facilitate the development of a sustainable, nationally coordinated clinical trials enterprise in Aotearoa New Zealand
- an HRC, Te Aho o Te Kahu (Cancer Control Agency) and Manatū Hauora funding call for research that drives equitable cancer outcomes
- an HRC and Pharmac initiative focused on equitable access to medicines
- an HRC and ACC funding call for research to improve health outcomes for ageing Māori.

The HRC maintains relationships with the health-related National Science Challenges and CRIs; and every year we pair up with the Royal Society Te Apārangi to present the annual Research Honours awards.

Supporting tertiary research providers

Tertiary organisations are the main providers of health research in Aotearoa New Zealand, and they host most of the research supported by the HRC. Tertiary organisations also host nationally significant resources and infrastructure, such as the New Zealand Brain Bank.

Alongside contestable funding they receive from the HRC for their research initiatives, tertiary organisations receive funding from the Tertiary Education Commission (TEC) which also funds the Centres of Research Excellence (CoREs) through the Performance-Based Research Fund. The HRC maintains links with CoREs.

Supporting independent research organisations

Independent Research Organisations (IROs) exist outside of the Crown Research Institute and tertiary sector. However, they undertake nationally significant research. The HRC's IRO Capability Fund currently supports four IROs whose work covers Māori-led research into public health, health services and policy; Māori research into health, the environment, and intergenerational trauma; biomedical research in cancer, asthma, allergy and microbiome research; and research to improve clinical management, clinical trial translation and implementation. This dedicated funding provides stability for IROs, enabling them to grow capacity and capability in areas that deliver to the HRC's and government's research priorities.

Research by non-government organisations

There are annual contributions to health research from the Lottery Health Research Committee and non-government organisations including Cure Kids, Breast Cancer Foundation NZ, the Heart Foundation, the Cancer Society, the Neurological Foundation, and medical research foundations. Many of these organisations have worked with the HRC on joint funding calls. As we develop the HRC's Priorities portfolio, we envisage opportunities for connecting and collaborating with more NGOs and building on established relationships.



Section 4 | Wāhanga 4:

Supporting government strategies

Ko te tautoko i ngā rautaki kāwanatanga

Recent changes in the health system and the introduction of the Pae Ora (Healthy Futures) Act will result in new health policies and plans over coming years. While pursuing our vision, the HRC will support the goals and requirements of both the health sector and Research, Science and Innovation (RSI) system, ensuring our work complements and furthers a range of policies and initiatives for improving health and wellbeing in Aotearoa New Zealand.

Meeting our minister's expectations

In our ministerial Letter of Expectations for 2023/24, the HRC was asked to consider how we might contribute to the early priorities for service and outcomes from the health reforms that are outlined in the 'interim Government Policy Statement'. These priorities include achieving equity in health outcomes and developing the health workforce of the future. The HRC's strategic intentions and desired outcomes align closely with the government's health priorities, and we will pursue them through the priority actions outlined in this Statement of Intent. Much of this work will involve working with other entities towards better system performance.

We are expected to consult on research priorities for the sector with Manatū Hauora, as the health system leader; and Te Aka Whai Ora (Māori Health Authority), as system lead for hauora Māori. We are also expected to engage with Te Whatu Ora (Health New Zealand) to increase the quality and quantity of research in the health system, bringing creative solutions that enable more health professionals to become part of the research workforce. The HRC will support Te Whatu Ora as it establishes a dedicated unit for overseeing research activity

across the health system, adding to collective efforts to strengthen research engagement in the health sector.

Below are a range of government strategies that will guide our work over the next four years.

New Zealand Health Research Strategy 2017 – 2027 (NZHRS)

As a Crown Agent, the HRC is required to give effect to government policy. We are informed by the New Zealand Health Research Strategy 2017-2027 which sets out the government's guiding principles, strategic priorities and actions towards building a world-leading health and innovation system that, through excellent research, improves the health and wellbeing of all New Zealanders.

The HRC has worked with MBIE and Manatū Hauora to jointly implement this strategy, and as part of this we launched the New Zealand Health Research Prioritisation Framework in 2019. This is now a benchmark for how and why health research needs to be done in Aotearoa New Zealand (see Appendix 2).

While the vision for the current strategy is still relevant, we will work with Manatū Hauora and other agencies to refresh the strategy, so it reflects the updated aspirations of the health and RSI sectors and the Crown's Te Tiriti obligations.

The New Zealand Health Research Prioritisation Framework*

The Prioritisation Framework outlines the high-level priorities for health research in Aotearoa New Zealand and provides enduring strategic signals that guide the HRC's objectives, priorities and investment decisions.

The framework consists of four 'health research domains' made up of research and infrastructure aims that have been identified as areas of critical inquiry or investment need. It also sets five 'health research attributes'. These attributes are intended to guide the way that research is designed, conducted and funded so that all government-funded health research advances priorities for Aotearoa New Zealand. The attributes ensure that we fund research that is needed in Aotearoa New Zealand and is appropriate for our context – i.e. advancing Māori by upholding and valuing Māori rights, worldviews and knowledge, and by addressing inequity in health outcomes.

We have aligned our funding opportunities and investment processes to the Prioritisation Framework, and our priority actions over the next four years will further support and reinforce the aims of the framework. We will develop reporting and feedback mechanisms to demonstrate how the framework is being applied and to enable ongoing evaluation and refinement of the framework. The HRC will share information on the implementation of the framework, including outcomes, challenges faced and lessons learned, in our reporting and accountability documents as well as in our communications with the research sector via our fortnightly newsletter *Update*.

*See Appendix 2.

Working collaboratively with the health sector

As the government's primary funder of health research, the HRC's investments help influence the future health and wellbeing of New Zealanders.

The research we fund ultimately flows into the health sector, producing the necessary knowledge, evidence and innovations to power and advance health policies and processes, as well as practices and services.

The HRC works with Manatū Hauora, Te Whatu Ora and Te Aka Whai Ora to build relationships with the sector and adapt our processes to ensure support for health system goals. Through the health delivery, clinical, and public health research we fund, and the research opportunities we provide to health professionals, the HRC will continue to develop research capacity and capability within the health system.

New Zealand Health Plan

At the time of writing, the New Zealand Health Plan is being drafted, which will factor in the roles of government agencies that contribute to health outcomes, including the HRC. As outlined in the Pae Ora (Healthy Futures) Act, this is a three-year costed plan for the delivery of publicly funded services by Te Whatu Ora and Te Aka Whai Ora.

The Plan will identify desired improvements in health outcomes and the priorities for achieving these. It will describe how the two health agencies will provide and commission services, and how other health entities will contribute to the desired improvements. The HRC will engage with health agencies in the preparation of the Plan, and support the desired outcomes.

He Korowai Oranga and Whakamaua: Māori Health Action Plan 2020-2025

He Korowai Oranga is Aotearoa New Zealand's Māori Health Strategy and guides the health and disability sector to achieve healthy futures for Māori. 'Whakamaua: Māori Health Action Plan 2020-2025' is the implementation plan for He Korowai Oranga. It sets the government's direction for Māori health advancement, guided by four high-level outcomes and underpinned by objectives and priority areas with tangible actions that can be implemented to achieve pae ora for Māori.

In 2022, the HRC and Manatū Hauora jointly funded an independent Māori-led research team to track the implementation and progress of the Whakamaua Māori Health Action Plan. In addition to the internal evaluation of the plan by Manatū Hauora, the research team's assessment will directly inform implementation, progress, and direction of Whakamaua from now through to 2025, and identify gaps that need to be filled along the way.

Te Ara Paerangi – Future Pathways

Te Ara Paerangi Future Pathways sets the vision and direction for the RSI system in Aotearoa New Zealand. It emphasises that the system must focus on what is most important and align and prioritise resources, as well as enhance how we create, absorb, use, and benefit from knowledge and technology, and translate discoveries into new products.

The vision is for an RSI system that supports wellbeing for all current and future New Zealanders, a high-wage low emissions economy, and a thriving, protected environment through excellent and impactful research, science and innovation. Its four key objectives are:

1. Te Hanga Anamata Hou – Creating New Futures

- Establish National Research Priorities
- Accelerate innovation, diversify and scale up impact
- Grow global connectivity.

2. Te Tāmau i Te Tiriti – Embedding Te Tiriti

- Advancing Māori aspirations in the RSI system
- Investing in mātauranga Māori, Māori knowledge
- Crown to lead by example.

3. Te Uara i Ō Mātou Tāngata – Valuing our People

- Attract, develop, and retain talented people
- Supporting diversity at all levels
- Empowering Pacific Peoples.

4. Te Hanga i te Kakama o te Pūnaha – Building System Agility

- Clarifying roles and responsibilities
- Coordinating investment in future-oriented infrastructure
- Designing resilient and adaptable public research organisations
- Funding mechanisms that support system goals.

The HRC is strategically aligned with the four key objectives of Te Ara Paerangi, by:

1. Funding priority-driven, mission-led research that will complement and link in with the national research priorities, facilitating collaboration between research groups (rather than competition) and encouraging joint applications of larger scale.
2. Te Tiriti informs how the HRC works and our goals and vision for excellent health research that benefits all New Zealanders. We have implemented a Te Tiriti o Waitangi-based partnership model and are committed to advancing Māori health across all our funding opportunities as well as through dedicated funding rounds for Māori health research and training programmes.
3. Investing in people and providing funding opportunities to help develop and sustain researchers at every career stage. This is a key focus area for the HRC. From career development awards to research grants, the HRC offers a pathway to building research leaders and champions in all fields of research, including Māori health, Pacific health and clinical research.
4. Working collaboratively across the sector and with MBIE to build a sustainable, resilient, and cohesive RSI system. We adapt our mechanisms and processes to ensure we deliver to government goals, meet complex challenges, and drive meaningful impact in health, our society, and our economy.

Vision Mātauranga

The Vision Mātauranga mission is to unlock the innovation potential of Māori knowledge, resources and people to assist New Zealanders to create a better future. The policy is supported by the Vision Mātauranga Capability Fund (VMCF) and accompanying Te Pūnaha Hihiko VMCF Investment Plan, designed to strengthen capability, capacity, skills and networks between Māori and the science and innovation system.

The Vision Mātauranga strategy has shaped the HRC's approach to Māori health advancement since 2007. We provide dedicated funding for research that addresses Māori health issues, develops Māori knowledge, and builds research capacity among the Māori workforce. We also invest in community-led health research that is driven by Māori for Māori, supporting communities to address self-identified health and wellbeing needs.

MBIE Diversity in Science Statement

This Statement aspires to a vibrant and successful science and research base that reflects the diversity of Aotearoa New Zealand. It recognises that diversity is vital for our science system to realise its full potential and to capture the very best ideas and talent to support the highest-quality research.

The HRC supports the statement with a focus on diversity among our Council, staff, committees, and the research teams we fund. We also use diversity metrics in our analytics and reporting. It's a priority for the HRC to build and sustain a health research workforce that reflects the communities and the population we serve.



Section 5 | Wāhanga 5:

Our performance framework Ko tā mātou mahere mahi

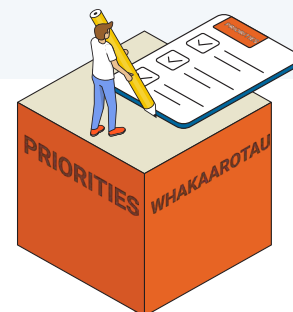
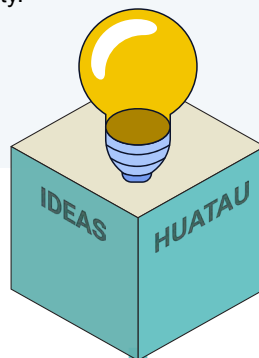
OUR CONTRIBUTION

We have a lead role in the health research sector, developing a skilled and diverse workforce, and investing in excellent research to improve wellbeing and achieve health equity.

Ā MĀTOU KOHA

He kaiārahi mātou i te rāngai rangahau hauora, ka whakaturia he ohu kaimahi pūkenga, kanorau hoki; ā, ka whakangao i te rangahau hiranga mō te whakapiki oranganui me te hauora mana taurite.

OUR FOCUS AREAS



Ā MĀTOU ARONGA

OUR PRIORITY ACTIONS

Invest in developing excellent health researchers.
Ka haumi kia whakaturia ngā kairangahau hauora hiranga.

Invest in health research that is excellent, innovative and impactful.
Ka haumi ki roto i ngā rangahau hauora hiranga, auaha, whakaaweawe.

Invest in priority health research gaps, needs and opportunities.
Ka haumi ki roto i ngā puare, ngā mea e matea ana, ngā āheinga hoki o te rangahau hauora.

Ā MĀTOU MAHI HAUMI

OUR STRATEGIC INTENTIONS

Advance Māori health | Kōkiri i te Hauora Māori
Pursue health equity | Whai i te tōkeke hauora
Foster excellence and innovation | Taurima i te hiranga me te auahatanga
Connect for greater impact | Paiheretia ana kia nui ake te pānga atu
Strengthen the health research ecosystem | Whakapakaritia te pūnaha rangahau hauora

Ā MĀTOU RAUTAKI TAKUNETANGA

OUR ASPIRATION

Every New Zealander benefits from an equitable world-leading health research system that contributes to positive health and wellbeing outcomes.

Ā MĀTOU TŪMANAKO

Ka whai painga ngā tāngata katoa o Aotearoa i tētehi pūnaha rangahau hauora kounga o te ao e takoha atu ana ki ngā hua hauora pai, oranganui hoki.

OUR GUIDING PRINCIPLE

Commitment to Te Tiriti o Waitangi

Ā MĀTOU MĀTĀPONO ĀRAHI

Te Whakapumautanga ki Te Tiriti o Waitangi

Focus area - People Aronga - Tāngata

Invest in developing excellent health researchers

We develop and support the people who deliver excellent health research across Aotearoa New Zealand.

What is needed and why it matters

Under the HRC Act 1990, we have a statutory responsibility to foster the recruitment, education, training, and retention of the health research workforce. That makes us ideally placed to support the government's Te Ara Paerangi Future Pathways reform programme, particularly with regards to developing the research workforce. It's also imperative we work with Manatū Hauora (Ministry of Health), Te Whatu Ora (Health New Zealand) and Te Aka Whai Ora (Māori Health Authority) to provide opportunities for health professionals to develop research skills and strengthen the culture of enquiry and innovation within the health sector.

Although our research community has produced world-leading health approaches, medical breakthroughs, and brought changes to health practice nationally and internationally, we recognise that New Zealand researchers have concerns about career precarity, limited diversity, and barriers to collaboration and mobility. These are issues the HRC is committed to addressing.

For decades the HRC has run a career development programme to help reduce barriers to entry and make research careers accessible, meaningful and sustainable. But we intend to better support New Zealand researchers, helping develop the research capability and capacity required for a robust and world-class RSI system.

For the health sector to play an active role in a vibrant research environment, the HRC must continue to offer funding opportunities that embed research skills and engagement in the places that healthcare is delivered. This includes developing clinical research capability, and enabling more

healthcare professionals to undertake research – an area we are gaining momentum in. In 2023, 40% of HRC workforce positions were held by practicing clinicians, and 48% held by those with clinical training.

To contribute to an equitable health system that delivers for all people, we must champion diversity, accessibility, inclusion and fairness in our funding. The HRC currently supports researchers from 99 ethnic groups, and women hold 55% of all HRC research positions.* However, there is more work to be done. We must develop talent in more diverse populations, including people with disabilities and those with diverse gender identities. This requires revising existing funding opportunities and implementing strategies to address ongoing barriers in access and advancement for some researchers and communities.

In line with the New Zealand Health Research Strategy, we must ensure appropriate systems are in place to fund research that improves outcomes for Māori. This includes supporting Kaupapa Māori research, led by Māori, which connects health to a collective sense of place as well as social, economic and cultural wellbeing. We are proud that Māori currently make up 19% of all HRC researchers and we will continue providing growth and leadership opportunities, beginning with community level training grants for those with no prior research training, through to clinical research training fellowships and funding for rangahau hauora projects and programmes.

To improve health outcomes for Pacific peoples, Pacific researchers must be supported to develop the methodologies, knowledge and solutions that make a meaningful difference to their communities. The HRC's funding for Pacific health research has helped build leadership, capability and capacity, resulting in 7% of HRC researchers now identifying as Pacific. We must still find ways to grow Pacific health research capacity across the career spectrum and ensure both Māori and Pacific researchers are better represented in the most senior career stage cohorts.

*Profile of HRC workforce 2017-2021.

The HRC's investment in people over the next four years will help advance the workforce goals of the RSI system, as well as build capacity for research within the health sector which will lead to improved health outcomes. Below is the contribution we will make.

Our focus for the next four years

In keeping with our strategic intentions, the following priority actions will guide our work in this focus area over the next four years:

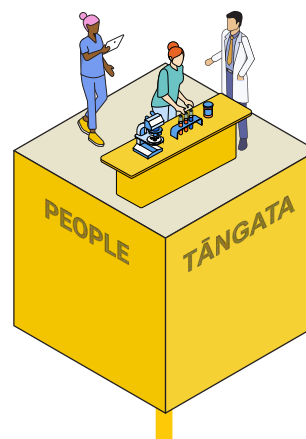
Advance Māori health: *Provide a full suite of career development opportunities for Māori health researchers, from early career to research leadership positions.*

The HRC will provide opportunities for launching research careers, such as Master's and PhD scholarships, as well as funding rangahau hauora training and development outside of academia. Through postdoctoral fellowships we will help Māori researchers establish their careers, as well as provide opportunities to train in clinical research which can expand their options along the career pathway.

Pursue health equity: *Attract and support a skilled, diverse and inclusive health research workforce who will contribute to building health equity.*

The HRC will develop strategies to make funding opportunities more accessible to under-invested research communities. This will involve working closely with the Māori Health Committee as our Te Tiriti partner, as well as creating and sustaining genuine relationships with researchers looking to build meaningful careers in research.

Elevating and supporting the Pacific health research workforce remains a key priority for the HRC. With a range of career development opportunities and targeted funding for Pacific-led research projects, we will begin work to realign our indicators of success and excellence with Pacific-centric values. The HRC will also ensure Pacific representation across the HRC's assessing and advisory committees to bring a Pacific lens over all decisions impacting Pacific research and researchers.



OUR PRIORITY ACTIONS Ā MĀTOU MAHI HAUMI

Invest in developing excellent health researchers.
Ka haumi kia whakatupuria ngā kairangahau hauora hiranga.

OUR STRATEGIC INTENTIONS Ā MĀTOU RAUTAKI TAKUNETANGA

Advance Māori health
Kōkiri i te Hauora Māori
Pursue health equity
Whai i te tōkeke hauora
Foster excellence and innovation
Taurima i te hiranga me te auahatanga
Connect for greater impact
Paiheretia ana kia nui ake te pānga atu
Strengthen the health research ecosystem
Whakapakaritia te pūnaha rangahau hauora

OUR DESIRED OUTCOMES Ā MĀTOU AWHEROTANGA

For research, science and innovation
Mō te rangahau, pūtaiao me te auaha

New Zealand has a highly skilled, innovative, diverse, connected and sustainable health research workforce, who are well supported to meet our local, global and future health needs.

Kia taunga a Aotearoa ki tētehi ohu kaimahi rangahau hauora pūkenga, auaha, kanorau, tūhono, toitū e kaha tautokohia ana ki te whakatutuki i ā mātou whāinga hauora ā-motu, ā-ao, āpōpō anō hoki.

For the health system
Mō te pūnaha hauora

Health researchers and healthcare professionals are well connected, engaged in research, and well-positioned to translate and apply this knowledge to improve health and wellbeing outcomes.

Kia paiheretia ana ngā kairangahau Hauora me ngā kaimahi hauora ngaio kia kotahi, e rangahau ana, ā, e mātau ana hoki ki te whakamārama, ki te whakamātau i te mātauranga ki te whakapai ake i ngā hua o te hauora me te oranganui.

Foster excellence and innovation: *Provide research opportunities for our health research talent across the career spectrum.*

We will provide career development opportunities for emerging researchers through to research champions, as well as continue to provide long-term funding for independent research organisations in Aotearoa New Zealand to support the unique and diverse capability fostered within these organisations.

Through recent HRC initiatives, the number of practicing clinicians undertaking research has increased, allowing health professionals to gain research training and directly contribute to evidence-based health policy and practice. We will continue providing research career pathways for health professionals and will work with Manatū Hauora, Te Whatu Ora and Te Aka Whai Ora to find further ways to develop research capacity within the health workforce of the future.

Connect for greater impact: *Connect early career researchers with established teams by providing development opportunities within grants.*

Through a range of health delivery research opportunities, the HRC helps bring together health researchers and health professionals to advance careers and build cross-sectoral experience and

insights. The HRC's investigator-initiated ideas and priority-driven research initiatives will create further opportunities for collaboration and for early career researchers to work with senior counterparts.

We will continue to support 'co-led' research – a change we introduced to foster capability development and contribute to succession planning. Early and mid-career researchers who have not previously held a project contract will be encouraged to 'co-lead' a project in combination with a mentor or experienced researcher, which will not only create learning opportunities but result in research teams of exceptional strength and interdisciplinary expertise.

Strengthen the health research ecosystem: *Improve stability of career pathways for health researchers.*

The HRC's systems and funding mechanisms influence and shape the health research environment, so we must periodically review our processes to keep pace with the changing health landscape. We will support system-wide initiatives to reduce career precarity while implementing funding mechanisms to maximise talent and potential, at career stages where support is most needed.

The HRC will also work to address any barriers experienced by researchers and routinely underinvested health research providers.



Our performance measures

Our intended outcomes	How measured	Baseline measures 2020-22
We support advancement of Māori health researchers.*	<p>Percentage of lead Investigators who are Māori.</p> <p>Number of Māori researchers supported who have held a PhD for more than 10 years.</p>	<p>23%</p> <p>89 individuals</p>
We support advancement of Pacific health researchers.*	<p>Percentage of lead Investigators who are Pacific.</p> <p>Number of Pacific researchers supported who have held a PhD for more than 10 years.</p>	<p>11%</p> <p>19 individuals</p>
We increase opportunities for early-stage career researchers.*	Number of lead or co-lead positions for researchers who have held a PhD for ≤10 years.	<p>PhD <6 years: 120 lead positions</p> <p>PhD 6-10 years: 111 lead positions</p>
We attract new healthcare delivery professionals to engage with health research.*	Number of individuals named on HRC research grants for the first time through health delivery research initiatives.	241 “new” individuals
We invest in a health research workforce that is skilled, diverse and inclusive.	We capture, monitor and report on HRC workforce by training, ethnicity and gender.	Baseline measures and updates to be reported in HRC's Annual Report.

* We seek to maintain or increase levels of investment in these focus areas.



Focus area - Ideas Aronga - Huatau

Invest in health research that is excellent, innovative and impactful

We invest in the best ideas and innovations proposed by researchers, designed to make a difference to health and wellbeing outcomes in Aotearoa New Zealand.

What is needed and why it matters

We are committed to building knowledge and evidence on issues that affect all New Zealanders, because we know that health outcomes, wellbeing, and our quality of life is improved by high-quality health research.

In funding the best investigator-initiated research, the HRC is guided by our strategic intentions and the research attributes of the New Zealand Health Research Prioritisation Framework, ensuring research is relevant, robust, builds towards health equity, and has strong potential for impact.

These elements are critical for identifying high-quality, high-impact research designed to meet our population's needs. However, for research to generate even greater health, wellbeing and economic returns, there needs to be a more seamless flow of knowledge from research providers through to the next users and end-users of research – an essential part of moving research findings into real-world settings.

Te Ara Paerangi Future Pathways aims to accelerate innovation and impact in the RSI system by strengthening collaboration, connectivity and knowledge exchange between research providers, end-users, health agencies and government. To support this, and to help power advances in health and wellbeing, the HRC will continue to emphasise and incentivise a pathway to impact, right from the outset when research ideas are planned, submitted

for funding, and assessed. We will also engage with Te Whatu Ora and Te Aka Whai Ora as significant end-users of health research and support their efforts to oversee research activity across the health system. In addition to this, we will scale up efforts to track, publicise, and share research outcomes and successes.

The knowledge, methods and innovations generated by Māori researchers and thought-leaders are unique to Aotearoa New Zealand, and a strength to be nurtured. We must continue to support Kaupapa Māori-led and Pacific research that can influence and benefit indigenous people and governments the world over.

In addition to this, the HRC contends that all health research in Aotearoa New Zealand should contribute to Māori health advancement. This includes fundamental research that forms the basis of scientific knowledge, theories and predictions, and discovery research that can lead to transformative change. We actively champion this principle, and recently formalised it as part of our assessment criteria for HRC funding.

To achieve a more equitable health research system, we must embed the intent of Te Tiriti o Waitangi across all aspects of our structure and funding system. In keeping with obligations of the Crown, the HRC is introducing system-level equity across everything we do. With the launch of our Equity Position Statement, we will implement our Action Plan which commits us to assessing, rebuilding and monitoring the aspects of our funding system that uphold and maintain inequities, imbalanced investment, bias, racism, and other forms of structural inequity. We will be guided by an internal work programme that will bring our equity commitments to life.

Our focus for the next four years

In keeping with our strategic intentions, the following priority actions will guide our work in this focus area:

Advance Māori health: *Identify and fund excellent research with a focus on advancing Māori health across all funding opportunities.*

The HRC's dedicated funding for Rangahau Hauora Māori is essential in upholding and enhancing the knowledge and worldviews that benefit individuals, whānau, communities and organisations in the most meaningful and direct way.

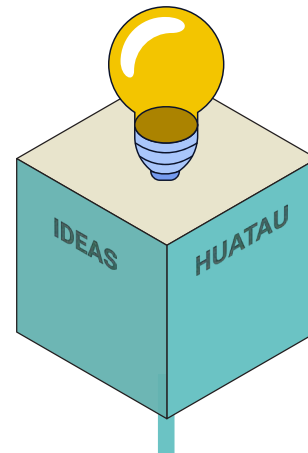
While continuing to support Kaupapa Māori research, we will ensure HRC funding applications are assessed for their potential to advance Māori health, alongside other key criteria for excellence. This will increase the likelihood that all research will address inequities and value Māori rights and knowledge, not only that which is centred on Māori or led by Māori.

We will ensure meaningful Māori representation at all levels of decision-making at the HRC, through a genuine partnership with the Māori Health Committee as our Te Tiriti partner.

Pursue health equity: *Fund excellent research focused on improving health equity across all funding opportunities.*

The HRC expects research proposals to align with the attributes set out in the New Zealand Health Research Prioritisation Framework. With this comes an expectation that all researchers, regardless of stage or discipline, will consider and address how their research will contribute to health equity in the short and long-term.

Going further, we plan to embed equity across our funding system. The HRC's Equity Position Statement will guide us in translating our overarching equity commitments into specific actions, such as ensuring all assessing committees are structured and supported to deliver fair, safe, and inclusive processes. Over time, this will likely include developing mechanisms to score research applications against indicators of equitable health research.



OUR PRIORITY ACTIONS Ā MĀTOU MAHI HAUMI

Invest in health research that is excellent, innovative and impactful.
Ka haumi ki roto i ngā rangahau hauora hiranga, auaha, whakaaweawe.

OUR STRATEGIC INTENTIONS Ā MĀTOU RAUTAKI TAKUNETANGA

Advance Māori health
Kōkiri i te Hauora Māori
Pursue health equity
Whai i te tōkeke hauora
Foster excellence and innovation
Taurima i te hiranga me te auahatanga
Connect for greater impact
Paiheretia ana kia nui ake te pānga atu
Strengthen the health research ecosystem
Whakapakaritia te pūnaha rangahau hauora

OUR DESIRED OUTCOMES Ā MĀTOU AWHEROTANGA

For research, science and innovation
Mō te rangahau, pūtaiao me te auaha

New Zealand's high-quality innovative health research produces transformational change, generating the knowledge to advance health, wellbeing and economic benefits both locally and globally.

Kia eke ai te kōunga, te auaha hoki o ā Aotearoa rangahau hauora e huri pai ai, e whakatupu ake ai hoki te mātauranga ki te kōkiri i te hauora, i te oranganui, i ngā hua ōhanga ā-motu, ā-ao.

For the health system
Mō te pūnaha hauora

Quality evidence underpins New Zealand's health system and services, and research directly contributes to a safe, effective and equitable health and disability sector.

He kōunga ngā taunakitanga hei tūāpapa mō te pūnaha hauora me ngā ratonga o Aotearoa, ā, e hāngai ana te rangahau kia haumaruru, kia kawekawe, kia tōkeke te rāngai hauora me whaikaha.

We will continue to build investment in Pacific health research and support Pacific researchers to develop Pacific knowledge and methodologies that help drive equitable outcomes for Pacific peoples.

A goal across all funding opportunities is to remove barriers to participation in research, which will include revising HRC investment opportunities, processes, policies, and data systems that potentially hinder equity and inclusion.

Foster excellence and innovation: *Identify and fund excellent and innovative health research.*

The HRC recognises that excellent research occurs across the spectrum of disciplines and methodologies and that diverse knowledge systems contribute to improved health and wellbeing outcomes. We will continue to support a broad portfolio of research across all disciplines to generate new knowledge and fuel discoveries with both shorter-term impact and a longer line-of-sight to health gains. This includes biomedical, public health, primary care and prevention, and social sciences research.

We will ensure ideas with transformative potential get off the ground, including discovery research or that with less predictable outcomes which helps challenge conventional wisdom and looks at solving health problems in new and novel ways.

As the health sector undergoes significant change, we will maintain our support for clinical and healthcare delivery research, continuing to engage health professionals in research activity. This type of research remains a key focus for government, valued for its potential to directly inform decisions and changes to healthcare policy, practice, or systems, contributing to health gains and system benefits in Aotearoa New Zealand.

Connect for greater impact: *Assess research applications on the quality of stakeholder engagement and potential to achieve meaningful impact.*

For research to have the best chance of making a difference, HRC funding applicants must demonstrate a clear line of sight to the eventual impacts of their work, with an action plan for getting there (usually involving the next users and end-users of research). They must also plan to maximise the interim benefits of their research, such as developing new workforce capabilities, intellectual property or forging international connections. As a funding assessment requirement, the HRC's 'impact' criterion is a strong lever for shaping and driving research outcomes and supporting the RSI system's innovation and impact goals.

Strengthen the health research ecosystem: *1. Ensure our funding process is robust, transparent, equitable, and designed to identify excellent and innovative research with the potential for meaningful impact. 2. Help ensure health research is ethical and safe.*

We will continue to run a robust funding process, with an increasing focus on diverse representation to meet the HRC's system-level equity commitments. We will work with Manatū Hauora to ensure the New Zealand Health Research Strategy and the HRC Act better reflect the current health research environment and the Crown's Te Tiriti obligations.

We will also work with Manatū Hauora, Te Whatu Ora and Te Aka Whai Ora to explore how research and innovation can underpin an evidence-based health and disability system that prioritises effective care, learning and continuous improvement at the centre of all it does. HRC-funded research will continue to build evidence for better models and ways to deliver healthcare equitably, improve efficiencies, and relieve cost pressures in health.

Through the work of our Ethics Committee and other advisory committees, we will continue to make a strong contribution to the ethics and regulatory frameworks in Aotearoa New Zealand.

Our performance measures

Our intended outcomes	How measured	Baseline measures 2020-22
Our funding mechanisms are redesigned in alignment with HRC's te Tiriti o Waitangi partnership model.	Advice is sought from the Māori Health Committee, particularly in relation to how advancing Māori health, and health equity are embedded within the redesign.	New measure
We design research processes to ensure our investments build towards health equity.	Equity is embedded in our funding/ assessment processes.	Not currently scored
We demonstrate the positive impact and outcomes of the excellent, innovative research that we fund. *	We publish and share funding outcomes, and we feature studies that demonstrate the benefits of our investment.	41 media releases 73 Update newsletters 31 featured studies
We fund research by Māori, for Māori.**	Number and value of researcher-led Māori health research projects or programmes.	14 Projects, \$16.5M 2 Programmes, \$10.0M
We fund research by Pacific, for Pacific.**	Number and value of researcher-led Pacific health research projects or programmes.	14 Projects, \$14.9M

* We seek to maintain or increase our dissemination of research benefits.

** We seek to maintain or increase levels of investment in these focus areas.

Focus area - Priorities Aronga - Whakaarotau

Invest in priority health research gaps, needs and opportunities

We invest in priority health issues through targeted investment mechanisms, often in partnership with stakeholders and communities of interest to respond to important research needs and address urgent and emerging priorities, critical gaps and cross-sectoral challenges.

What is needed and why it matters

The Health Research Council plays a central role in identifying research priorities and creating opportunities for them to be addressed. By partnering with stakeholders, we can coordinate research efforts, accelerate the uptake of research, and reduce duplication.

In 2023 we will launch our new mechanism for priority-driven mission-led research, enabling targeted investment in strategically important areas, including under-funded health issues. These are areas where the HRC can take a leadership role through providing targeted funding and facilitating a collaborative and connected approach to research, which can include partnership with impacted communities and an equity-focused research response. Investments will be identified by the HRC's internal gap analyses as well as those signalled by government and external parties. This initiative replaces our former partnership programme and corresponds with the proposed introduction of national research priorities.

A much stronger focus on alignment and coordination is needed to grow impact from RSI research efforts. The future envisaged by Te Ara Paerangi Future Pathways requires greater flexibility, cross-cutting, and closer integration across organisations and research areas, and deeper connections between business, government,

and other users of research. The HRC's priority-driven focus area will work in concert with government-set priorities to strengthen impact and enhance value from publicly funded research.

In deciding where scarce health research resources are directed, equity must be a core principle and outcome of HRC investment. We are committed to supporting community-led research on issues of importance to iwi, hapū and other Māori community groups. To do this, we must make the research process more accessible and enable communities to build the skills and connections to engage in research.

As the past few years have demonstrated, the research sector must always be ready to respond to threats, some urgent and unforeseen. The HRC must be agile enough to act quickly when required, as we did with COVID-19, the Canterbury earthquakes, the Havelock North campylobacter outbreak, and the H1N1 virus.

As well as having the tools in place to launch a rapid research response, Aotearoa New Zealand must have a well-resourced and equipped research sector that can be mobilised into action, ready to translate its expertise into evidence-based solutions when needed most. The HRC's long-term funding for nationally significant research can nurture critical innovation, discovery, and capability, all of which brings long-term benefits to health, the economy, environment, and society.

Our focus for the next four years

In keeping with our strategic intentions, the following priority actions will guide our work in this focus area over the next four years:

Advance Māori health: *Work with Māori researchers to fund research priorities identified by Māori, for Māori.*

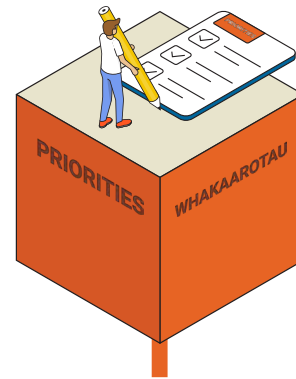
The HRC is committed to operating in true partnership with Māori, and further building the processes and reciprocal relationships to effectively address priority health and wellbeing needs. By designing research initiatives with the HRC's Māori Health Committee and ensuring meaningful tangata whenua participation in decision-making, we will create space for Māori to lead change towards their health and wellbeing aspirations.

As well as supporting Māori health research in institutional and clinical settings, we will increase research participation at a grassroots level. We know Māori health research is often driven by communities, so we will provide targeted support for iwi, hapū and community groups to undertake research that addresses self-identified issues while upholding rangatiratanga, advancing Māori knowledge, resources, and people.

Pursue health equity: *Invest in priority health research gaps that build towards achieving health equity.*

Equity is at the heart of our Priorities portfolio. Through proactive targeted and responsive investment, and in partnership with a broad and diverse range of communities of interest, we will address health issues of strategic importance for Aotearoa New Zealand, including under-researched areas of health as identified by ongoing investment gap analyses.

Working with Manatū Hauora, Te Whatu Ora and Te Aka Whai Ora, we will explore how HRC investment can better deliver research to address health system gaps and priorities. Subsequently, we will respond to and support national research priorities, ensuring all our initiatives are aligned with the attributes of the New Zealand Health Research Prioritisation Framework.



OUR PRIORITY ACTIONS Ā MĀTOU MAHI HAUMI

Invest in priority health research gaps, needs and opportunities.
Ka haumi ki roto i ngā puare, ngā mea e matea ana, ngā āheinga hoki o te rangahau hauora.

OUR STRATEGIC INTENTIONS Ā MĀTOU RAUTAKI TAKUNETANGA

Advance Māori health
Kōkiri i te Hauora Māori
Pursue health equity
Whai i te tōkeke hauora
Foster excellence and innovation
Taurima i te hiranga me te auahatanga
Connect for greater impact
Paiheretia ana kia nui ake te pānga atu
Strengthen the health research ecosystem
Whakapakaritia te pūnaha rangahau hauora

OUR DESIRED OUTCOMES Ā MĀTOU AWHEROTANGA

For research, science and innovation Mō te rangahau, pūtaiao me te auaha

Priority health challenges and opportunities are pursued to create meaningful impact in areas of critical importance to New Zealand's wellbeing and prosperity.

Kia whāia ngā wero me ngā āheinga o te hauora kia whai hua pai ai ki ngā wāhi hirahira o te oranganui me te tōnuitanga o Aotearoa.

For the health system Mō te pūnaha hauora

Through collaboration, partnership and targeted investment, the translation of research findings is accelerated to tangibly advance health, wellbeing, and equity goals.

Mā te mahi tahi, rangapūtanga me te āta haumi, ka whakawhiti ngā hua rangahau kia tere ake ai te kōkiri i ngā whāinga o te hauora, o te oranganui, o te mana taurite.

Foster excellence and innovation: *Fund excellent and innovative research focused on addressing research and capability gaps in high priority areas.*

We will provide longer-term funding for organisations making unique contributions to the strategic priorities of the HRC and New Zealand Health Research Strategy. Stable funding enables researchers to extend their research plans and goals, secure patents, and establish links with clinicians, health providers, policy makers, community groups and industry, resulting in greater impact in the long term. With investment in independent research organisations, we will help grow the capability and expertise required to address complex health challenges.

We will continue to invest in Aotearoa New Zealand's longitudinal studies which form part of our national data and policy backbone. These studies look beyond the present to consider the intergenerational impacts of key health determinants, and are an extremely valuable resource for researchers, health professionals and policymakers who can use the findings to understand what drives health outcomes and inequities in different groups of people.

Connect for greater impact: *Connect and partner with key stakeholders to fund research in priority areas.*

The HRC's mission-led targeted funding mechanism will be characterised by early input from communities of interest and research users. We will bring together multiple 'impact partners' with the aim of leveraging funds and creating funding opportunities of higher value, greater duration and potential impact.

Through greater oversight of HRC funding initiatives by Māori and Pacific representatives across our committees, we will try to ensure HRC-funded research meets the needs of all the populations it serves.

Strengthen the health research ecosystem: *Work across the health and RSI sectors to identify and fund critical evidence gaps; and promote systems, policies and practices that enhance the value of health research for Aotearoa New Zealand.*

In our Priorities portfolio, we will consult with health system agencies and bring together key players to address nationwide health issues in a cohesive way that reduces waste and duplication of research efforts. Through a variety of longer-term investments, we will bring additional RSI benefits by building unique capability, knowledge, and invaluable databases for future research and innovation.

We will implement process and assessment changes that will expand our commitment to equity, Māori health advancement and Pacific health advancement. This involves mapping and monitoring our investment profile to promote equitable investment strategies and decision-making, and targeting investment towards systemically under-funded research priorities.

We will also support and contribute to sector-wide data initiatives, such as the New Zealand Research Information System, which will allow analysis of the impact of funding investments in health research.

Our performance measures

Our intended outcomes	How measured	Baseline measures 2020-22
We continue to fund targeted initiatives for health research priorities identified by Māori communities.*	Investment in Māori-led Ngā Kinohi Kitea Community Grants. Number of Māori host organisations.	13 grants, \$2.1M 33 Māori organisations hosting 47 contracts
We boost cross-sectoral research in priority health areas to build towards equitable health outcomes.	How many “missions” under our “connecting for impact” initiative are selected using gap analysis and the New Zealand Health Research Prioritisation Framework.	100% (Climate Change was selected using the Strategic Filter that incorporated both elements).
Our investment provides more evidence to improve healthcare delivery.	Number of new or improved clinical guidelines, technology, intervention, policy or process outputs reported by researchers overall, and from health delivery portfolio.	204 healthcare delivery outputs reported across our investment, including 26 from Health Delivery Projects.

* We seek to maintain or increase levels of investment in these focus areas.



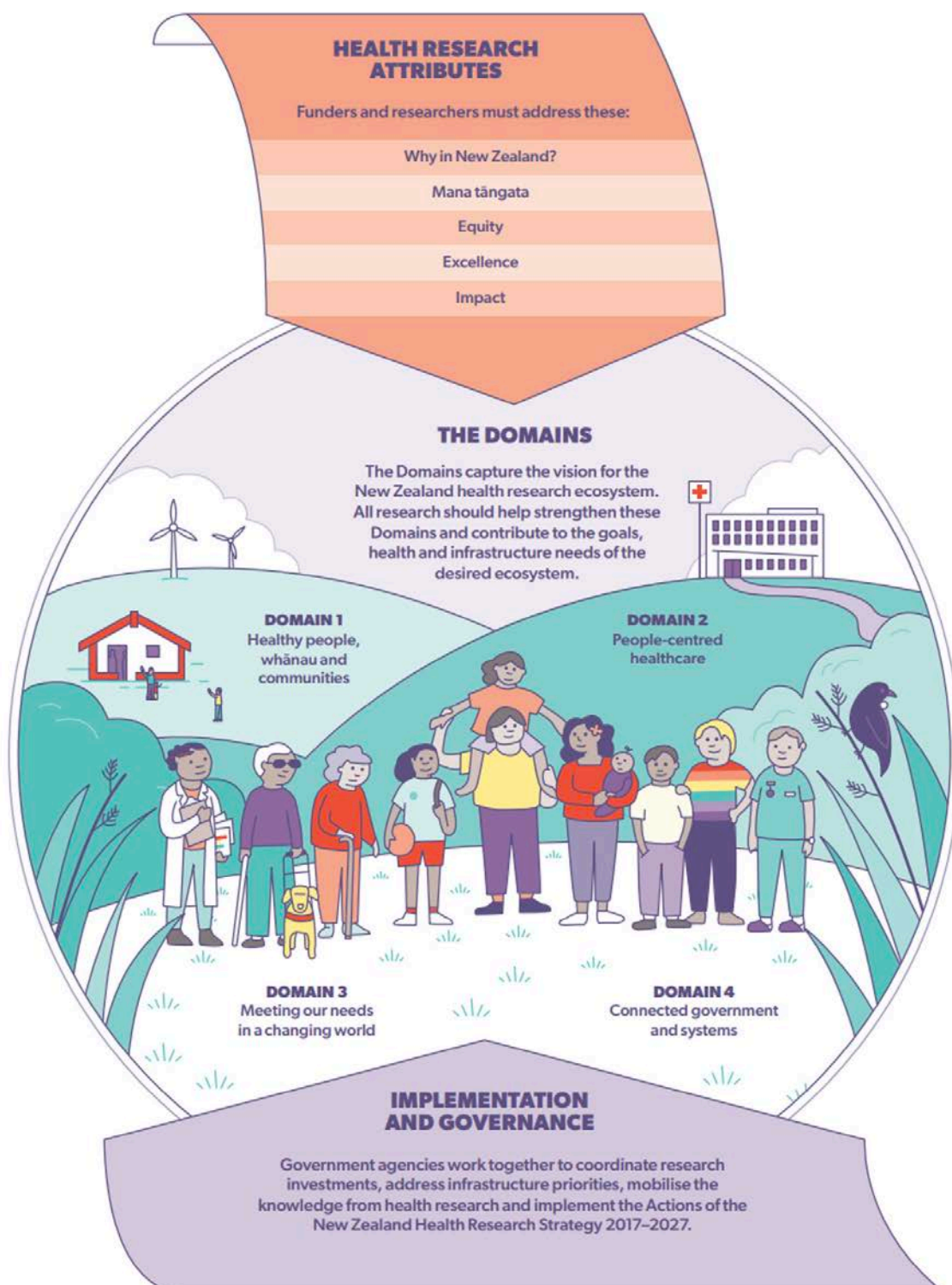
Appendix 1 | Tāpiringa 1:

The HRC's reporting requirements Ko ngā here ā-pūrongo tā HRC

Forward-looking	Performance-based
<p>The Statement of Intent signals our intentions for the next four years and medium-term measures of performance (produced every three years and required under the Crown Entities Act 2004). This Statement of Intent covers the period from 1 July 2023 to 30 June 2027.</p>	<p>The Annual Report outlines our performance in the previous year; details our progress on performance measures; and includes our financial statements (required annually under the Crown Entities Act 2004).</p>
<p>The HRC's three-yearly Research Investment Plan, provides details of HRC funding opportunities for the next three years to send stable signals to the research community (required by MBIE).</p>	<p>Six-monthly and quarterly financial reports</p> <ul style="list-style-type: none">• This exceptions-based six-monthly document reports against the SPE and the Crown Funding Agreement/Output Agreement with Manatū Hauora and MBIE.• The quarterly financial document reports against the SPE and the Crown Funding Agreement/Output Agreement with Manatū Hauora and MBIE.
<p>The Statement of Performance Expectations (SPE) contains forecast performance for the next year and financial information (required annually under the 2013 amendments to the Crown Entities Act 2004).</p>	<p>The Investment Impact Report demonstrates the impact that HRC investment has had and provides advice on increasing the impact of future investments (required every three years to inform budget bids by Manatū Hauora and MBIE).</p>

New Zealand Health Research Prioritisation Framework

Ko te Mahere o ngā Rangahau Hauora Matua o Aotearoa



Appendix 3 | Tāpiringa 3:

The HRC's functions under the Act

Ko ngā āheinga o HRC i raro i te Ture

The HRC's functions under the Health Research Council Act 1990

- a. To advise the minister* on national health research policy.
- b. To administer funds granted to the Council for the purpose of implementing national health research policy.
- c. To negotiate, once every three years, the bulk funding allocations that may be made to the Council by the Government for the funding of health research.
- d. To foster the recruitment, education, training, and retention of those engaged in health research in New Zealand.
- e. To initiate and support health research.
- f. To encourage initiatives into health research by soliciting research proposals and applications, particularly in areas considered by the Council to have a high priority.
- g. To consult, for the purpose of establishing priorities in relation to health research, with:
 - (i) the Minister of Health
 - (ii) the Ministry of Health
 - (iii) District Health Boards
 - (iv) other persons who fund or produce research, whether in the public sector or the private sector
 - (v) persons who have knowledge of health issues from the consumer perspective.
- h. To promote and disseminate the results of health research in ways that will be most effective in encouraging their contribution to health science, health policy, and healthcare delivery.
- i. To advertise actively for applications for grants to support proposals or personal awards in relation to health research.
- j. To appoint the members of the Biomedical Research Committee, the Public Health Research Committee, the Māori Health Committee and the Ethics Committee.
- k. To ensure the development and application of appropriate assessment standards by committees or subcommittees that assess health research proposals.
- l. To administer any additional funds that may be made available to the Council from either public or private sources for the support of health research.

**The Act was written when the Minister of Health both owned, and managed the funding for, the HRC.*

hrc **nz**

Health Research Council
of New Zealand

Te Kaunihera Rangahau Hauora o Aotearoa



**Te Kāwanatanga
o Aotearoa**
New Zealand Government

© 2023 Health Research Council of New Zealand

Published by the Health Research Council of New Zealand

PO Box 5541, Victoria Street West, Auckland 1142, New Zealand
Telephone: 09 303 5200
Email: info@hrc.govt.nz

This document is available on the Health Research Council of New Zealand
Website: <https://www.hrc.govt.nz>