



**hrc** nz

Health Research Council  
of New Zealand

Te Kaunihera Rangahau Hauora o Aotearoa

# Research Investment Plan Ko te Mahere Whakangao Rangahau 2023 – 2026



**Te Kāwanatanga  
o Aotearoa**  
New Zealand Government

# Foreword from our Chair

## He kupu nā tō mātou Heamana

At the heart of every investment decision the Health Research Council (HRC) will make over the next three financial years, is the desire to achieve our aspiration for every New Zealander to benefit from an equitable world-leading health research system that contributes to positive health and wellbeing outcomes. Our aspiration is bold, but we know that we have the potential to achieve it with the support of Aotearoa New Zealand's health research community.

This Research Investment Plan sets out the HRC's investment framework. In doing so, we outline areas of focus and importance and are asking researchers applying for HRC funding to think about how their research connects with and contributes to advancing one or more of our strategic intentions and investment signals. That is, to advance Māori health, pursue health equity, foster excellence and innovation and connect for greater impact. It is through collective action and commitment to our shared aspiration that meaningful and positive changes to health and wellbeing will come.

In the next three financial years from 1 July 2023, the HRC remains committed to supporting the excellent health researchers Aotearoa New Zealand needs, to funding excellent, innovative and impactful investigator-led health research and teams, and to providing targeted investment to respond to important research needs and address urgent and emerging priorities, critical gaps and cross-sectoral challenges. Over this time, we will also continue to seek out new and innovative opportunities to meet our investment objectives and the needs of the health research community, with details of new initiatives available on HRC Gateway in due course.

The HRC fulfils an important leadership role in the Research, Science and Innovation (RSI) system and health sector. Through our planned investments, the HRC aims to continue to help provide the quality evidence that underpins Aotearoa New Zealand's health system and services, and the acceleration of the translation of research findings to tangibly improve health, wellbeing, and health equity. This will involve working closely with Manatū Hauora, Te Whatu Ora and Te Aka Whai Ora to build relationships with the sector and adapt our processes to ensure support for building health research capacity and capability within the health system. We will also keep working to ensure that Aotearoa New Zealand has highly skilled, innovative, diverse and connected health researchers who are well supported to meet our local, global and future health needs. By doing this, our high-quality innovative health research produces transformational change, generating the knowledge to advance health, wellbeing and economic benefits both locally and globally.

This Research Investment Plan provides focus and direction for coordinated action across Aotearoa New Zealand's health research community over the next three years. We look forward to the vital contributions excellent, impactful and innovative health research will make as a result.



**Professor Lester Levy,**  
CNZM, Chair

# Contents

## Ihirangi

---

<b>Foreword from our Chair</b>	<b>2</b>
<b>He kupu nā tō mātou Heamana</b>	

---

<b>Section 1: About the HRC</b>	<b>4</b>
<b>Wāhanga 1: Mō Te Kaunihera Rangahau Hauora o Aotearoa</b>	

---

<b>Section 2: The HRC's Investment Framework</b>	<b>6</b>
<b>Wāhanga 2: Ko te mahere whakangao o HRC</b>	
Investment Areas	6
Strategic Intentions	6
Investment Mechanisms	8

---

<b>Section 3: Investment signals</b>	<b>9</b>
<b>Wāhanga 3: Ko ngā tohu whakangao</b>	
New funding opportunities for researchers	10
Existing funding opportunities for researchers	11

---

<b>Section 4: Understanding the HRC in the national context</b>	<b>13</b>
<b>Wāhanga 4: Ko te mārama ki a HRC i roto i te motu nei</b>	
Working collaboratively with the health sector	13
Working collaboratively across the RSI system	14

---



## Section 1 | Wāhanga 1:

# About the HRC

## Mō Te Kaunihera Rangahau Hauora o Aotearoa

This Research Investment Plan provides information about the Health Research Council of New Zealand's investment framework and signals for three financial years from 1 July 2023 to 30 June 2026. It gives researchers high-level guidance about the intended priorities for, and outcomes sought from our funding.

The Health Research Council of New Zealand (the HRC) is a Crown Agent and the Government's primary funder of health research in Aotearoa New Zealand, investing around \$120 million each year. As a Crown Agency, the HRC acknowledges Māori as tāngata whenua and partners with the Crown. We aspire to all our investments, policies and systems upholding the principles of Te Tiriti o Waitangi.

The HRC was established through the Health Research Council Act 1990<sup>1</sup> (the Act) and is accountable to the Minister of Health and the Minister of Research, Science and Innovation. Our mandate as set out in the Act, is to:

1. advise our Ministers on national health research policy;
2. initiate and support health research, particularly in high-priority issues and areas;
3. foster the recruitment, training, and retention of health researchers in New Zealand;
4. negotiate and administer funding for health research;
5. promote and disseminate the results of health research; and
6. maintain a safe and ethical health research environment, including ensuring the safety of large clinical trials.

The HRC provides leadership and oversight of the health research sector by contributing to the development of a skilled and diverse workforce and

investing in excellent research to improve health, wellbeing and health equity. Informing our vision for excellent health research is Te Tiriti o Waitangi, guiding us to uphold Māori rights, worldviews and knowledge. A health research system that is fit for Aotearoa New Zealand must recognise and support mātauranga Māori and kaupapa Māori methodologies and through the HRC Māori Health Committee (MHC), our Te Tiriti partner, we seek to ensure iwi, hapū and Māori communities are represented in the research process. We're proud to contribute to evidence-based interventions that support those who experience unfair and unjust health outcomes, because reducing inequities benefits society.

Guided by Government's vision and goals for health research, we design and manage funding opportunities and the funding process. Through contestable funding rounds, we support excellent ideas from Aotearoa New Zealand's health researchers, as well as initiate and commission research in priority areas where we identify immediate research and evidence needs or critical research gaps. Funding opportunities are offered across the full spectrum of health research including biomedical, clinical, public health, health services, Māori health and Pacific health research. The HRC welcomes applications that explore the way biological, social, cultural and environmental determinants of health interact to influence health and wellbeing now, throughout lifetimes and across generations.

<sup>1</sup> Note a review of the Health Research Council Act 1990 is currently under consideration which could result in changes to the legislative structure and functions of the Health Research Council.



We play an important role within the Research, Science and Innovation (RSI) system and health sector by contributing to the development of people and their careers to ensure Aotearoa New Zealand has the diverse, inclusive and equitable health research workforce it needs. There are funding opportunities across all career stages and in areas where increased capacity is needed namely Māori and Pacific health researchers, health professionals and emerging research leaders.

Our investment processes are tailored for each opportunity to ensure we achieve the objectives sought from every investment. The HRC has several Statutory and Standing Committees<sup>2</sup> who play a vital role in the assessment process. Our Statutory Committees and the Pacific Health Research Committee advise on the funding offered and chair the relevant Science Assessing Committees (SACs) which score applications and produce a ranked list of fundable proposals for assisting funding recommendations to the HRC Council. The MHC as our Te Tiriti partner also fulfil other statutory functions namely, they direct work related to developing Māori health research priorities, distribute funds dedicated to Māori health research and Māori health researchers, advise HRC Council on matters relating to Māori health research and advise on the appointments to our Statutory and Standing Committees to ensure they have the skills and competencies needed to execute their functions and that Māori are part of the decision-making process. Our ethics and regulatory committees are integral to ensuring Aotearoa New Zealand health research is ethical and safe and we advise the Minister of Health on the safe uptake of new health technologies and conduct of clinical trials.

<sup>2</sup> Statutory Committees: Māori Health Committee; Biomedical Research Committee; Public Health Research Committee; Ethics Committee. Standing Committees: Pacific Health Research Committee; Data Monitoring Core Committee (DMCC); Standing Committee on Therapeutic Trials (SCOTT); Gene Technology Advisory Committee (GTAC).

## Section 2 | Wāhanga 2:

# The HRC's Investment Framework

## Ko te mahere whakangao o HRC

The HRC's investment framework signals to researchers our focus for investment in health research for the next three financial years, from 2023 to 2026.

The investment framework has three focus areas for investment underpinned by cross-cutting strategic intentions, which form the actions the HRC is going to undertake to achieve our aspiration for every New Zealander to benefit from an equitable world-leading health research system that contributes to positive health and wellbeing outcomes. All applicants should consider how their proposal will contribute to advancing the strategic intentions in this Research Investment Plan.

### Focus Areas

What does the HRC want to achieve through its investments over the next three financial years?

The HRC has three areas for investment<sup>3</sup> designed to ensure that every investment decision made is focused on the HRC meeting its aspiration.

#### People

We develop and support stable careers for people to deliver excellent health research that meets the needs of Aotearoa New Zealand's local and global communities, and future health needs.

#### Ideas

We invest in excellent ideas and innovations proposed by researchers, designed to make a difference to health and wellbeing outcomes for people, whānau and communities in Aotearoa New Zealand.

#### Priorities

We invest in priority health issues through targeted investment mechanisms, often in partnership with stakeholders and communities of interest to respond to important research needs and address urgent and emerging priorities, critical gaps and cross-sectoral challenges.

The three focus areas for investment are applicable across the entire spectrum of health research, from basic to applied and across all research disciplines.

There are five strategic intentions (below) that span all focus areas and give further guidance to researchers on what the HRC is looking to invest in.

### Strategic Intentions

What will the HRC invest in over the next three financial years to achieve its aspiration?

Five overarching strategic intentions apply across all HRC's focus areas. They are to:

- Advance Māori health
- Pursue health equity
- Foster excellence and innovation
- Connect for greater impact, and
- Strengthen the health research ecosystem.

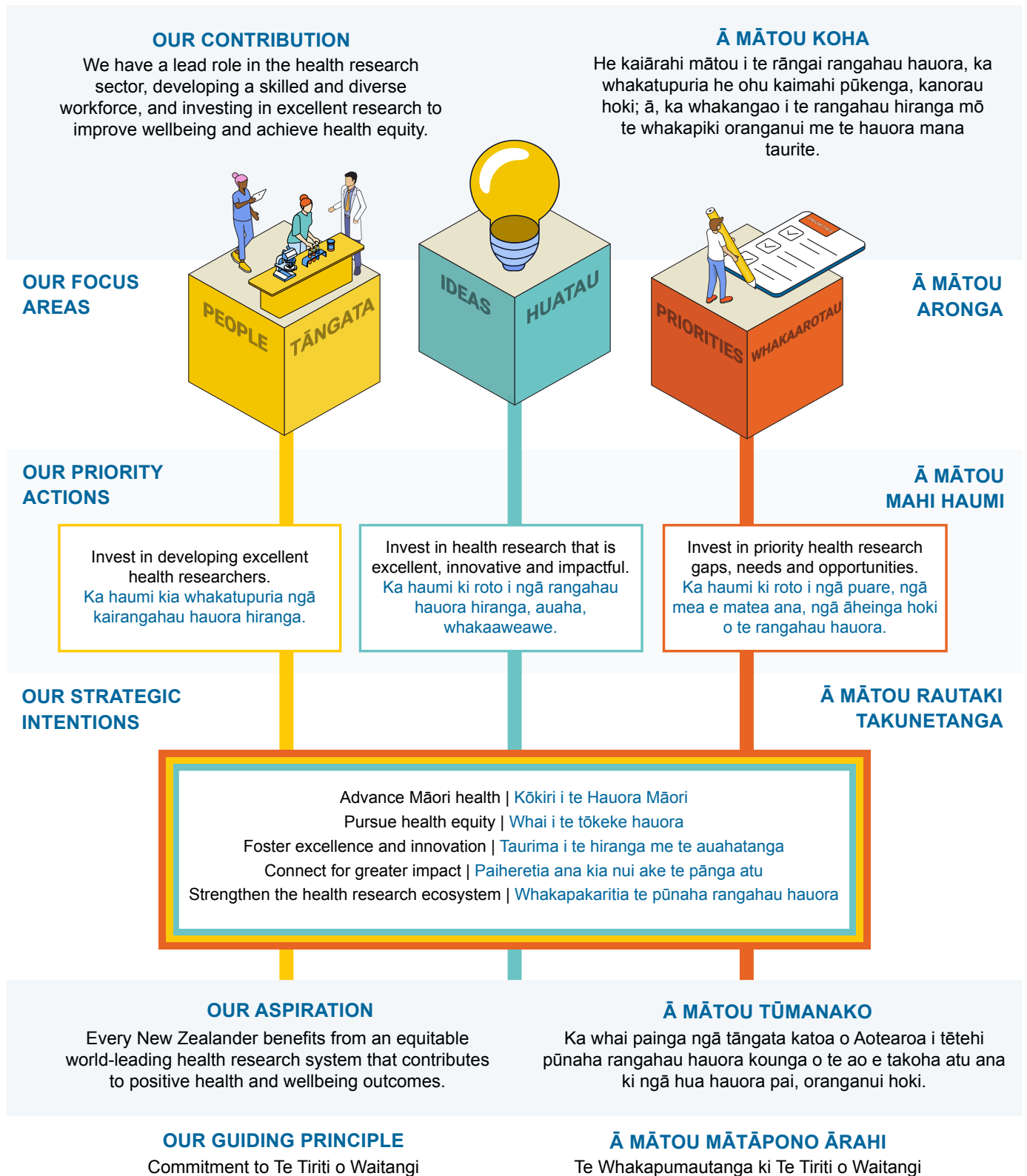
Our investment framework outlines how each of the strategic intentions form priority actions<sup>4</sup> that the HRC will be taking to achieve its aspiration. Every investment decision needs to advance one or more of the strategic intentions.

The investment signals in this Research Investment Plan (see Section 3), are the actions we are asking researchers to take to help the HRC advance our strategic intentions and achieve our aspiration. By thinking about how their research proposal connects to the investment signals, researchers will have fulfilled their requirement to advance one or more of the strategic intentions. Funding proposals must follow the detailed requirements outlined for each individual funding opportunity on [HRC Gateway](#).

<sup>3</sup> For detailed information about each investment area please refer to our Statement of Intent 2023 - 2027 on the HRC website.

<sup>4</sup> For more detailed information about the priority actions the HRC will be taking to achieve them please refer to our Statement of Intent 2023 - 2027 available on the HRC website.







## Investment Mechanisms

### How does the HRC make its investments?

The HRC has a number of mechanisms by which it makes its investments. This includes but is not limited to:

- **Investigator-initiated:** the HRC awards funds through multiple contestable funding rounds run annually, to excellent ideas identified by researchers.
- **Rapid response:** where there is critical need to commission an urgent health research solution, HRC launches a rapid response health research opportunity.
- **Funding highly innovative and novel research** by randomising funding allocation with applications blinded to mitigate bias. Applications deemed fundable based on being potentially transformative,<sup>5</sup> viable and advancing Māori health are awarded funding based on randomisation. All proposals that have been assessed as meeting these three criteria are equally likely to receive funding.
- **Negotiated funding:** where HRC seeks to directly engage with research providers and invest in specific research outcomes.
- **Partnering:** HRC works with strategic and / or financial Impact Partners to identify priorities for investment, leverage funds and maximise research benefit and uptake.
- **International agreements and consortia:** HRC connects with the international research effort through international agreements and consortia and may periodically release research calls in areas of mutual priority.

The HRC uses a range of processes to identify research most likely to contribute to improving the health and wellbeing of New Zealanders. Our investment processes are tailored to suit the funding opportunity. Grant-specific information including application and assessment processes, eligibility criteria, and assessment criteria are available in the guidelines for each award type and are available in full on [HRC Gateway](#). The HRC Council are responsible for making investment decisions which are influenced by the level of funds available and the quality of applications received.

---

<sup>5</sup> HRC defines transformative research as research that promises extraordinary outcomes, such as revolutionising entire disciplines; creating entirely new fields; or disrupting accepted theories and perspectives. In other words, those endeavours which have the potential to change the way we address challenges in health.

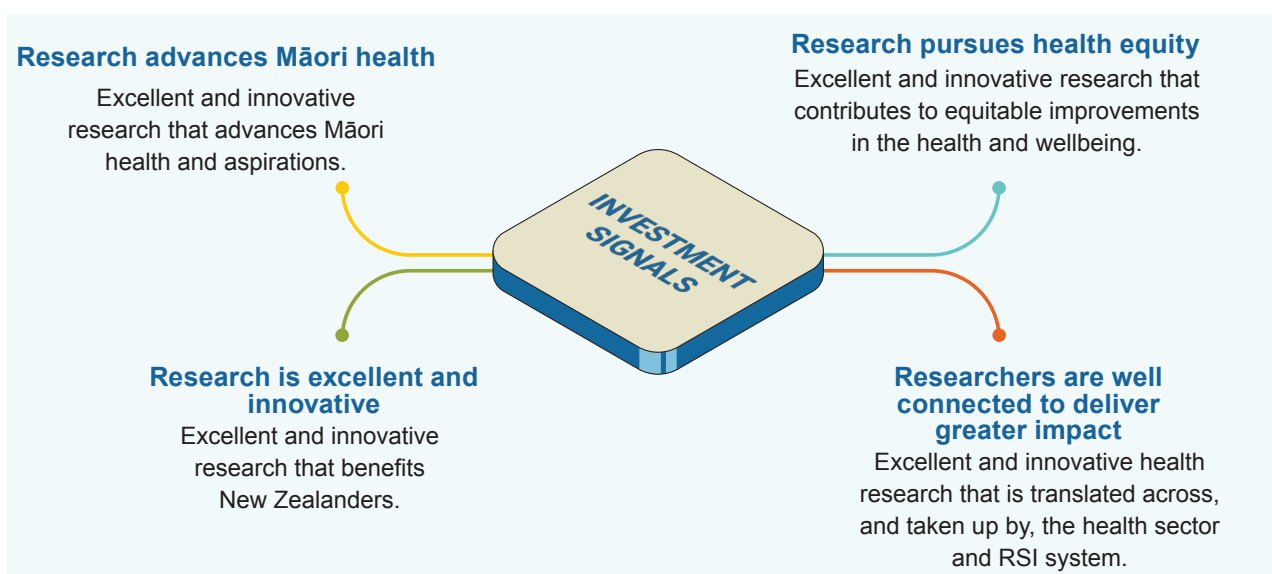


## Section 3 | Wāhanga 3:

# Investment signals

## Ko ngā tohu whakangao

The HRC is looking for opportunities to fund proposals that help us meet our aspiration. To do this, the HRC expects researchers to consider how their applications will address the investment signals set out in this Research Investment Plan. For information on specific funding opportunities, please refer to the application guidelines on HRC Gateway.



### Research advances Māori health Mā te rangahau e kōkiri te hauora Māori

The HRC is committed to advancing Māori health by upholding and valuing Māori perspectives through our investments. This is outlined in our [Māori Health Advancement Guidelines](#) introduced in 2019, which are shaped by the Vision Mātauranga policy and aligned with Te Ara Paerangi – Future Pathways, to advance Māori aspirations in the RSI system and invest in mātauranga Māori.

Key considerations when applying for funding include:

- Doing excellent, innovative and impactful research which will contribute to advancing Māori health, including creating opportunities for Māori to pursue their own health research priorities and aspirations.

- How your research funding will train and support stable careers from early career to research leadership positions, for the Māori health researchers Aotearoa New Zealand needs.

### Research pursues health equity Mā te rangahau e whai te tōkeke hauora

Pursuing health equity is at the heart of what we do and a priority for all HRC funding.

Key considerations when applying for funding include:

- Doing excellent, innovative and impactful health research which will contribute to making equitable improvements in the health and wellbeing of all New Zealanders.
- How your research funding will train and support building a skilled, diverse and inclusive health research workforce who will contribute to pursuing health equity.

## Research is excellent and innovative He hiranga, he auaha te rangahau

The HRC supports excellent and innovative research that benefits all New Zealanders. We seek to continue to support research that addresses key knowledge needs, better utilises the knowledge we generate, and provides innovative solutions to improve health and wellbeing outcomes.

Key considerations when applying for funding include:

- Doing excellent, innovative and impactful health research focused on high priority areas or high-risk ideas or aligned to the National Research Priorities.
- How you and your research team will create opportunities for, or support health researchers on your research team to develop stable careers from early career to research leadership positions, as part of your research funding.

## Researchers are well connected to deliver greater impact Paiheretia ana ngā kairangahau ki te puaki i ngā pānga kē atu

The HRC is a key part of the wider RSI system and health sector. We seek to enhance connectivity nationally and internationally to deliver impact from our investments.

Key considerations when applying for funding include:

- Delivering excellent, innovative and impactful health research that is translated across, and taken up by, the health sector and RSI system.
- How you and your research team will grow your connections and engagement across disciplines, with Māori, key stakeholders, the health system, industry, community, next- and end-users and internationally, to create a pathway to meaningful impact.

## New funding opportunities for researchers

To be able to meet our investment objectives and aspiration, the HRC is tailoring existing and introducing new funding opportunities for researchers over the next three financial years. New investment opportunities that we can signal at this time are identified below. As this Research Investment Plan covers a three-year period, all future opportunities will be publicised with details provided on [HRC Gateway](#), as they become available.

### Connecting for Impact Fund

In 2023, the HRC will launch our new targeted investment mechanism, the Connecting for Impact Fund. The Fund will enable the HRC to better target priority gaps and opportunities in health research and meet strategic and equity goals. The Fund has two unique pathways for identifying priorities for investment: those identified by the HRC; and research investment priorities identified by external organisations.

The Connecting for Impact Fund will strengthen research outcomes through connecting with communities of interest, government and non-government organisations to address complex health issues in areas of high priority that require a collaborative, cross-sectoral approach. Included in the Fund is a rapid response mechanism that allows research to be commissioned quickly when an urgent response is required, such as to the COVID-19 outbreak.

Further information on the Connecting for Impact Fund is available on the HRC website.

### Ngā Kanohi Kitea Community Advancement Fund

We will continue to implement our redesigned Ngā Kanohi Kitea (NKK) Community Advancement Fund. The HRC invests approximately \$1.982 million annually from the MBIE administered Vision Mātauranga Capability Fund (VMCF) to support the Hauora/Oranga research theme of the Vision

Mātauranga policy. HRC's investment mechanism for the VMCF is the NKK Community Advancement Fund. The NKK Community Advancement Fund provides an opportunity for iwi, hapū, other Māori organisations, and Māori researchers or research teams to undertake self-identified health research that can make a direct and significant difference to the health and wellbeing of their communities. The following grants are available:

- **Ngā Kanohi Kitea Training Grant** (establishing or elevating capability within Māori communities)
- **Ngā Kanohi Kitea Development Grant** (preparing to undertake a health research project or activity)
- **Ngā Kanohi Kitea Project Grant** (responding to self-identified evidence needs)
- **Ngā Kanohi Kitea Knowledge Mobilisation Grant** (enhancing the uptake of community mātauranga)

## Existing funding opportunities for researchers

For the next three financial years, the HRC will maintain our support across our three investment areas as follows:

### People

- Developing the **excellent health researchers** Aotearoa New Zealand needs. This includes targeted health research training programmes across the career spectrum to help build stable career pathways for the next generation of leaders. We will also continue to offer dedicated opportunities for Māori, Pacific peoples and healthcare professionals.

### Ideas

- Excellent, innovative and impactful **investigator-led** health research and teams.
- Dedicated funding streams for **Rangahau Hauora Māori research** and kaupapa Māori-led research, to address Māori health issues and enrich Māori knowledge to improve health outcomes for Māori.

- Dedicated funding to support **Pacific health research** that will contribute towards achieving better health outcomes for Pacific peoples, families, and communities.
- **Clinical and health delivery research** that will directly improve health delivery by informing decisions or changes to policy, practice, services or systems in the New Zealand health and disability sector.
- Investment in **innovative, exploratory or unconventional but potentially transformative research** with the knowledge that some may initially fail but overall, the successes will bring extraordinary benefits.

### Priorities

- **Targeted investment**, often in partnership through our Connecting for Impact Fund, to respond to important research needs and address urgent and emerging priorities, critical gaps and cross-sectoral challenges. This may include partnering with **international agencies** to link researchers with global research efforts, increase international research collaborations and gain access to international expertise and resources.
- Continued investment in targeted initiatives for health research priorities identified by Māori communities through our **NKK Community Advancement Fund**.
- Long-term stable support for **Independent Research Organisations** (IROs) to build and retain critical research capability which contributes to equitable health outcomes and meet the government's and HRC's research priorities.
- Investment in **longitudinal studies** to support capability development and national data collection in areas of specific value to Aotearoa New Zealand.



Details of each funding opportunity, such as the level of funding available and eligibility and assessment criteria can be found within application guidelines which are available on the HRC website.<sup>6</sup>

Other valuable information such as ethics guidelines for health research, Māori health research, and Pacific health research, a copy of the HRC research contract and the New Zealand Standard CV template are on the HRC's research contract management system [HRC Gateway](#). By following the guidance and documentation for a specific funding opportunity, researchers will have fulfilled their requirements to align to the research investment signals.

---

<sup>6</sup> Available at: [www.hrc.govt.nz](http://www.hrc.govt.nz)

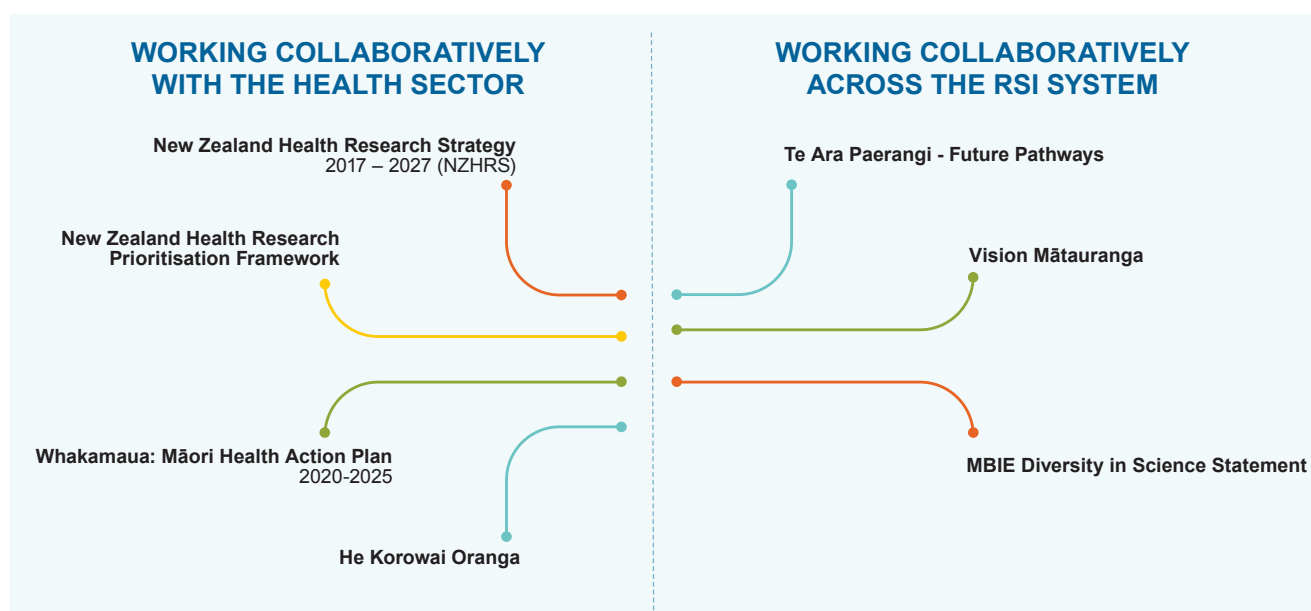


## Section 4 | Wāhanga 4:

# Understanding the HRC in the national context

## Ko te mārama ki a HRC i roto i te motu nei

The HRC makes an important contribution to both the health sector and RSI system. We do this through the investments we make but also by being responsive and contributing to Government policies and strategies. This Section outlines, outside of Te Tiriti o Waitangi, the HRC Act 1990, and our annual Letter of Expectations from our Ministers,<sup>7</sup> the key policies and strategies that guide our work.



### Working collaboratively with the health sector

Through our investments and funding processes we help provide the quality evidence that underpins Aotearoa New Zealand's health system and services, and the acceleration of the translation of research findings to tangibly improve health, wellbeing, and health equity. The HRC works with Manatū Hauora, Te Whatu Ora and Te Aka Whai Ora to build relationships with the sector and adapt our processes to support building health research capacity and capability within the health system.

### New Zealand Health Research Strategy 2017 – 2027 (NZHRS)

Manatū Hauora – Ministry of Health is leading the implementation of the NZHRS and in 2023 will begin a refresh of the Strategy. Whilst the Vision for New Zealand to have a world-leading research and innovation system that, through excellent research, improves the health and wellbeing of all New Zealanders remains, the refresh will focus on updating the strategy to reflect Aotearoa New Zealand's changing health sector and align with wider changes to the RSI system.

<sup>7</sup> HRC is accountable to the Minister of Health, our responsible Minister, and the Minister of Research, Science and Innovation, our funding Minister.

The Strategy defines four strategic priorities to achieve its Vision:

- **Strategic Priority 1:** Invest in excellent health research that addresses the health needs of all New Zealanders.
- **Strategic Priority 2:** Create a vibrant research environment in the health sector.
- **Strategic Priority 3:** Build and strengthen pathways for translating research findings into policy and practice.
- **Strategic Priority 4:** Advance innovative ideas and commercial opportunities.

The HRC leads implementation of Strategic Priority 1 and works collaboratively with Manatū Hauora – Ministry of Health and MBIE to deliver Strategic Priorities 2, 3, and 4.

As part of Strategic Priority 1, the [New Zealand Health Research Prioritisation Framework](#) was launched. It prioritises how and why health research needs to be done in Aotearoa New Zealand. There are four Health Research Domains<sup>8</sup> made up of Research and Infrastructure Aims that have been identified as areas of critical inquiry or investment need. The five Health Research Attributes<sup>9</sup> guide 'how' health research is undertaken. The Attributes ensure that government funded health research is that which needs to be done in Aotearoa New Zealand and is appropriate for the New Zealand context - advancing Māori health by upholding and valuing Māori rights, worldviews and knowledge, tikanga Māori (Māori processes and protocol), and by addressing inequity. The HRC's funding opportunities and investment processes are aligned to the Framework.

## He Korowai Oranga and Whakamaua: Māori Health Action Plan 2020-2025

He Korowai Oranga is Aotearoa New Zealand's Māori Health Strategy and guides government and the health and disability sector to achieve pae ora (healthy futures) for Māori.

Whakamaua: Māori Health Action Plan 2020-2025 is the implementation plan for He Korowai Oranga. It sets the government's direction for Māori health advancement through to 2025, guided by four high-level outcomes and underpinned by objectives and priority areas with tangible actions that can be implemented to achieve pae ora for Māori. In 2022, the HRC and Manatū Hauora jointly funded Māori-led research to advance Māori insights and evidence within the health and disability sector by researching progress on the outcomes and objectives of Whakamaua throughout its duration. The research findings directly inform the implementation, progress and direction of Whakamaua, and support pae ora for Māori.

## Working collaboratively across the RSI system

Through our investments, the HRC works to achieve outcomes across the RSI system and support the delivery of wider government science policy and priorities. We look to ensure that Aotearoa New Zealand has highly skilled, innovative, diverse and connected health researchers who are well supported to meet our local, global and future health needs. By doing this, our high-quality innovative health research produces transformational change, generating the knowledge to advance health, wellbeing and economic benefits both locally and globally.

## Te Ara Paerangi - Future Pathways

Te Ara Paerangi – Future Pathways sets the vision and direction for the RSI system in Aotearoa New Zealand. Its vision is for an RSI system that supports wellbeing for all current and future New Zealanders, a high-wage low emissions economy, and a thriving, protected environment through excellent and impactful research, science and innovation.

<sup>8</sup> Domain 1: Healthy people, whānau and communities; Domain 2: People-centred healthcare; Domain 3: Meeting our needs in a changing world; Domain 4: Connected government and systems.

<sup>9</sup> Why in New Zealand?; Mana tāngata; Excellence; Impact; Equity.



There are four key objectives:

1. **Te Hanga Anamata Hou – Creating New Futures**

- Establish National Research Priorities
- Accelerate innovation, diversify and scale up impact
- Grow global connectivity.

2. **Te Tāmau i Te Tiriti – Embedding Te Tiriti**

- Advancing Māori aspirations in the RSI system
- Investing in mātauranga Māori, Māori knowledge
- Crown to lead by example.

3. **Te Uara i Ō Mātou Tāngata – Valuing our People**

- Attract, develop, and retain talented people
- Supporting diversity at all levels
- Empowering Pacific Peoples.

4. **Te Hanga i te Kakama o te Pūnaha – Building System Agility**

- Clarify roles and responsibilities
- Co-ordinating investment in future-oriented infrastructure
- Designing resilient and adaptable public research organisations
- Funding mechanisms that support system goals.

The HRC strategically aligns with the four key objectives of Te Ara Paerangi by:

1. Funding transformative research relevant to the National Research Priorities and with a strong line of sight to the eventual impact for society.
2. Te Tiriti informs how the HRC works and our goals and vision for excellent health research that benefits all New Zealanders. We offer dedicated funding streams for research to address Māori health issues and training programmes.
3. Investing in people and providing career development opportunities to help build sustainable career pathways for the next generation of researchers including Māori, Pacific peoples and health professionals.
4. Working collaboratively across the sector and with MBIE to build a sustainable, resilient, and cohesive RSI system that supports people to address our biggest challenges and opportunities and create meaningful impact.



### Vision Mātauranga

The mission of Vision Mātauranga is to unlock the innovation potential of Māori knowledge, resources and people to assist New Zealanders to create a better future. The policy is embedded across all MBIE's priority investments with applicants asked to consider how their proposal will give effect to it and contribute to its outcomes. There are four themes within the Policy which provide strategic direction. They are:

1. Indigenous innovation – Contributing to economic growth through distinctive science and innovation.
2. Taiao – Achieving environmental sustainability through iwi and hapū relationships with land and sea.
3. Hauora/Oranga – Improving health and social wellbeing.
4. Mātauranga – Exploring indigenous knowledge and science and innovation.

MBIE also administers the Te Pūnaha Hihiko: Vision Mātauranga Capability Fund (VMCF) which makes investments to strengthen the capability, capacity, skills and networks between Māori and the science and innovation system, and increases understanding of how research can contribute to the aspirations of Māori organisations and deliver benefit for Aotearoa New Zealand. The HRC administers funds on behalf of the VMCF to support the Hauora/Oranga research theme (refer to Section 3 for further details).

### MBIE Diversity in Science Statement

The Statement aspires to a vibrant and successful science and research base that reflects the diversity of New Zealand. It recognises that diversity is vital for our science system to realise its full potential and ensures Aotearoa New Zealand will capture the very best ideas and talent to support the highest quality research. The HRC supports the Statement with a focus on diversity among our Council, staff, committees, the research teams we fund, and utilises diversity metrics in our analytics and reporting. The HRC is working to build and sustain a health research workforce that reflects our diverse communities.





Health Research Council  
of New Zealand

Te Kaunihera Rangahau Hauora o Aotearoa



**Te Kāwanatanga  
o Aotearoa**  
New Zealand Government

© 2023 Health Research Council of New Zealand

Published by the Health Research Council of New Zealand

PO Box 5541, Victoria Street West, Auckland 1142, New Zealand

Telephone: 09 303 5200

Email: [info@hrc.govt.nz](mailto:info@hrc.govt.nz)

This document is available on the Health Research Council of New Zealand

Website: <https://www.hrc.govt.nz>