



# Te Mahere Whakamātāmuatanga a Rangahau Hauora Aotearoa



E whakanui ana i ngā hua  
o te rangahau hauora mō  
ngā iwi o Aotearoa





# Ngā Ihirangi



<b>Hei Whakataki</b> .....	4
E hiahia ana ki te mōhio ki te whānuitanga o te whakapapa? .....	4
Ko ngā mātāpono hei tūāpapa mō te mahere whakamātāmua .....	4
He aha te take o tēnei mahere? .....	5
Mā wai te mahere whakamātāmua? .....	5
<b>Te Mahere Whakamātāmuatanga a Rangahau Hauora Aotearoa</b> .....	6
<b>Ngā Wāhanga Rangahau Hauora</b> .....	7
He aha ngā Wāhanga Rangahau? .....	7
Mā hea whakamahia ai Ngā Wāhanga Rangahau? .....	7
<b>Ngā Mātāpono Rangahau Hauora</b> .....	12
He aha Ngā Whāinga Rangahau? .....	12
Ka pēhea te whakamahi i Ngā Mātāpono Rangahau Hauora? .....	12
<b>Āpitianga 1: Te Whakapapa o te Mahere Whakamātāmua</b> .....	19
He aha i waihangatia ai te mahere whakamātāmua? .....	19
He aha te take o te mahere whakamātāmua? .....	19
Kua pēhea te whanaketanga o te mahere whakamātāmua? .....	20



# Hei Whakataki

Kua waihangatia mai tēnei mahere whakamātāmua hei wāhanga o New Zealand Health Research Strategy 2017-2027 (NZHRS)<sup>1</sup>.

E rua ngā wāhanga motuhake o te mahere nei hei arāhi i te whakamātāmua o te rangahau mā roto mai i tōna hanganga mai:

- + Ko tā Ngā Wāhanga Rangahau he whakaahua i ngā whāinga o te NZHRS mā ngā hua ā-hauora, ā-hapori nui hei tānga manawa ki Aotearoa whānui – arā, he hua kua āta whakaritea mai hei whakapiki i te taiao hauora.
- + Ko tā Ngā Mātāpono Rangahau Hauora he whakamātāmua i ngā mātāpono matua e rima o te rangahau hauora me te whakatau i ngā tūranga me ngā haepapa mō ērā e whai wāhi ana.

E whakaatu ana te hoahoa kei te whārangi 6 te āhua o te mahi tahi o ēnei mea katoa.

## E hiahia ana ki te mōhio ki te whānuitanga o te whakapapa?

Pāwhiria ngā tuinga e whai ake nei, tirohia rānei Ngā Āpitianga:

- > [He aha i waihangatia ai te mahere whakamātāmua?](#)
- > [He aha te take o te mahere whakamātāmua?](#)
- > [Kua pēhea te whanake haere o te mahere whakamātāmua](#)

## Ko ngā mātāpono hei tūāpapa mō te mahere whakamātāmua

Ko te tūāpapa o tēnei mahere ko ngā mātāpono matua hei whakapiki i te āhua o tā tātou rangahau i te hauora i Aotearoa. E hāngai ana ēnei mātāpono, ki ngā pou o Research, Science and Innovation Strategy<sup>2</sup> – arā, ko te kounga, te pāpānga me te tūhonohonotanga.

- + Ko te whakamātāmua mā roto mai i te hanganga mai o te rangahau
- + Whanake i te hauora Māori (tirohia Ngā Mātāpono Rangahau – Mana Tāngata, wh15)
- + Whakatutuki i te mana taurite ā-hauora (tirohia Ngā Mātāpono Rangahau – Mana Taurite, wh18)
- + He matapopore i tētahi pūnaha rangahau kounga (tirohia Ngā Mātāpono Rangahau – Kounga, wh16)
- + He tautoko i te rangahau tūhura (tirohia Ngā Mātāpono Rangahau – Kounga, wh16)
- + He mahi tahi ki ngā hapori, he whakakaha hoki i a rātou (tirohia Ngā Mātāpono Rangahau – Pāpānga, wh17)
- + He urupare atu i ngā pāpānga ā-taiao e hāngai ana ki te hauora o te tangata
- + He whakatō i ngā tika tangata ki te rangahau hauora.

<sup>1</sup> <https://www.health.govt.nz/system/files/documents/publications/nz-health-research-strategy-jun17.pdf>

<sup>2</sup> I tēnei wā, ko te National Statement of Science Investment, e whakahoungia ana kia whakaputaina ki tētahi ingoa hou.

## He aha te take o tēnei mahere?

Ko tā tēnei mahere whakamātāmua, he:

- + Whakakotahi i te hunga whaipānga ā-hauora – arā, ko ngā kaituku pūtea, ngā kaiwhakarato rangahau, ngā kapa rangahau, me ngā hapori – ki te kōkiri i ngā hua ā-hauora, ā-hapori pai rawa atu ka puta i te rangahau hauora – Ngā Wāhanga Rangahau Hauora, whārangi 7.
- + Tautohu i ngā wāhanga hei aronga mō te rangahau me te whakahaere – Ngā Whāinga ā-Rangahau, ā-Whakahaere, whārangi 8–11.
- + Whakamātāmua i te āhua o te rangahau hauora, otirā, te take me rangahau i te hauora i Aotearoa kia kitea ai te ara tika ki te whakatinana mai i Ngā Wāhanga Rangahau Hauora – Ngā Mātāpono Rangahau Hauora, whārangi 12.

## Mā wai te mahere whakamātāmua?

Ko tā tēnei mahere he whakaū i te tautokohia o te rangahau pai rawa atu e tutuki ai ngā whāinga kua rārangitia mai e NZHRS. Nā tēnei, e hāngai ana te mahere ki ngā tāngata katoa ka wāhi mai, tae atu rā ki te hunga whiwhi painga i te rangahau hauora.

He mahere tēnei mā te hunga katoa ka āhei ki te ahuahu, ki te whakatipu, ki te whanake rānei i te rangahau i Aotearoa. Mā tēnei ka whai rautaki ki te whakamahere i te rangahau o mohoa nei, ki te tautohu i ngā ara uiui hirahira, me te whakamōhio anō i te hanganga mai o te rangahau. Ko ngā kaiwhakamahi matua kua tautohua i tēnei mahere ko:

- + Ko ngā kaituku pūtea: ko ngā rōpū me ngā whakahaere katoa, ahakoa kāwanatanga, kāore rānei, e tuku pūtea ana ki te rangahau hauora. Ko ērā e tuku ana i ngā pūtea kāwanatanga me ū mai, engari kua hangā mai te mahere kia kapi mai ko ngā kaituku pūtea e hiahia ana ki te tautoko i te whakaaro kotahi mō te rangahau hauora. Ka uru mai ko ngā kaituku pūtea ā-iwi, ā-hapori hoki, tae atu rā ki ngā rōpū mākohakoha me ngā kamupene.
- + Ngā kaiwhakarato rangahau: ko ngā whakahaere katoa e rangahau hauora ana. Ka kapi mai ko ngā whare wānanga, ngā kuratini, ngā kaiwhakarato hauora, Crown Research Institutes, ngā umanga ā-iwi, ngā rōpū ā-hapori, ā-ahumahi hoki, kāore e whai hononga ana ki te kāwanatanga

+ Ngā kairangahau me ngā rōpū rangahau: ko ērā e rangahau ana i te hauora me te waiora

+ Ngā hapori: ka whakamanatia ō rātou tūranga maha hei kaituku pūtea rangahau, kaiwhakarato rangahau, kaiuru me te hunga whiwhi i ngā hua rangahau.

He rōpū whakamahi matua te ahumahi, ka whai wāhi ki ngā rangahau hei mahi tahi ki ngā kaituku pūtea, kaiwhakarato, hei hoa mahi rānei ki ngā hapori.

Ahako e hāngai ana Ngā Wāhanga me ngā Mātāpono Rangahau ki ngā rōpū katoa, ko te whai kia ngāwari hoki te āhua e pai ai te aro a tētahi ki te/ngā wāhanga e tika ana ki a rātou. Ka wātea ngā kaituku pūtea rangahau ki te aro ki Ngā Wāhanga Rangahau Hauora i a rātou ka waihangā i ō rātou rautaki rangahau, mātua rā i ngā wā e utungia ana te rangahau e 'whai kaupapa' ana, ā, ka aro kē pea ngā kaiwhakarato me ngā kairangahau ki Ngā Mātāpono Rangahau Hauora i a rātou e waihangā ana i te 'rangahau nā te kaiwhakatewhatewha i arahi'. Mā ēnei ēnei mea e rua, arā, te rangahau whai kaupapa me te rangahau e arahina ana e te kaiwhakatewhatewha, e tutuki ai ngā whāinga o NZHRS.

Ka kapi i te mahere whakamātāmua ngā haumi/tukunga pūtea kāwanatanga katoa i ngā rangahau hauora e puta ai ngā hua nunui ki a Aotearoa. Mā te mahere e whakamōhio ngā rautaki tuku pūtea a te Kaunihera Rangahau Hauora o Aotearoa (HRC), Te Manatū Hauora (MoH), Ngā Poari Hauora ā-Rohe (DHBs), me Hikina Whakatutuki (MBIE), ā, ka arahi hoki i ētahi atu wāhanga o ngā rangahau whai kaupapa e utua ana e Te Kāwanatanga pēnei i National Science Challenges, ngā rōpū rangahau o te hauora me te rangahau hauora kua utua e ngā kaiwhakarato hauora me ētahi atu rōpū e tautokohia ana e te kāwanatanga. Ko ngā haumi-ruatanga i waenga i te kāwanatanga, te ahumahi, me te wāhanga kore utu ka tohutohua hoki e tēnei mahere.

# Te Mahere Whakamātāmuatanga a Rangahau Hauora Aotearoa

## NGĀ MĀTĀPONO HAUORA O AOTEAROA

Mā ngā kaituku tahua, kaiwharato rangahau me ngā kairangahau ēnei e whakatutuki

Aotearoa, he aha ai?

Mana Tāngata

Mana Taurite

Kounga

Pāpānga

## NGĀ WĀHANGA

Ka kapi i Ngā Wāhanga te whāinga nui o te taiao o te rangahau hauora i Aotearoa. Me whai kia whakapakaritia Ngā Wāhanga nei e ngā mahi rangahau katoa me te āwhina hoki ki te whakatutuki i ngā whāinga, te hauora, me ngā hiahia ā-whakahaere e hāngai ana ki te taiao nei.

### WĀHANGA 1

Te hauora o te tangata, te whānau me te hapori

### WĀHANGA 2

Hauora ā-Tāngata

### WĀHANGA 3

Te whakatutuki i ngā āhuatanga o tēnei ao hurihuri

### WĀHANGA 4

Te mahi tahitanga a te kāwana me ngā pūnaha

## TE WHAKATINANA ME TE WHAKAHAERE

Ka mahi tahi ngā tari kāwanatanga ki te whakarite haumi rangahau, whakatutuki i ngā take matua ā-mahere, kōkiri i ngā mōhiotanga nō te rangahau hauora me te kōkiri anō i te mahere New Zealand Health Research Strategy 2017 – 2027.

# Ngā Wāhanga Rangahau Hauora

He kauneke i te tūruapō o NZHRS mā ngā hua hauora, waiora kounga hei tūmanakotanga mā Aotearoa whānui.

## He aha ngā Wāhanga Rangahau?

He tūmanako Ngā Wāhanga Rangahau mō Aotearoa, e whakaatu ana i te hononga o te hauora me ngā take hapori.

He whai wāhitanga nui tō te Kāwanatanga, ngā rōpū tuku pūtea, ngā kaiwhakarato rangahau me te hauora, me ngā kairangahau ki te whakapiki i te hauora me te waiora o ngā tāngata o Aotearoa mā roto mai i te rangahau. Mā roto mai i Ngā Wāhanga Hauora, kua puta ētahi whāinga e hāngai ana ki te a) rangahau me te e) whakahaere. He wāhanga ēnei kua tautohutia hei whakatewhatewhanga, he whakahaere rānei kua tipakohia hei wāhanga matua i te kauneketanga o ia Wāhanga, ā, ka whakahoutia kia whanake haere ana te pūnaha rangahau hauora me te mātauranga e kohia ana. Kua whakaritea mai te Wāhanga 4 kia aro pū ki ngā mahi a te kāwanatanga whānui.

## Mā hea whakamahia ai Ngā Wāhanga Rangahau?

Kua whakarārangitia mai te āhua o te whakamahinga o ēnei Wāhanga e ngā momo rōpū whakamahi i raro iho i ēnei whakaupokotanga.

### Kaituku pūtea

Ka whakamahia e te kāwanatanga ēnei Wāhanga ki te whakapuaki kawatau ki ngā rōpū tuku pūtea, ā, ki te whakawhāiti mai i ētahi tahua hou mō te rangahau hauora me te aroturuki hoki i ngā tukunga pūtea.

Kāore te mahere whakamātāmua e tohu pūtea ki ngā Wāhanga, ā, kāore hoki e whai ana kia whakamahia mai hei puna pūtea. Engari kē ia, me whakamahi e ngā kaituku pūtea Ngā Wāhanga Rangahau Hauora, hei tauira whakariterite i ā rātou mahere tuku pūtea me ō rātou whai wāhitanga ā-pūtea, hei rekoata, hei pūrongo rānei i ngā hua rangahau, hei whakataurite rānei i ngā tukunga pūtea. Kei roto i ngā Whāinga ko ētahi aronga hirahira mō ia Wāhanga kia tautohutia ai e ngā kaituku pūtea ngā kōhao mātauranga i ngā tukunga pūtea 'whai-kaupapa'.

Kua waihangatia mai Ngā Wāhanga kia ngāwari ai te whakahāngai atu ki ngā hiahia o ngā rōpū kaituku pūtea hauora katoa. Mā ngā kaituku pūtea tonu e kōwhiri te āhua o tā rātou aro ki Ngā Wāhanga me Ngā Whāinga e haere tahi atu ana. Mā te mahere e whakakakotahi, e whakahaere hoki te kōrero tahitanga i waenga nui i ngā rōpū tuku pūtea rangahau hauora matua e ū ai, e tika ai hoki, i te mutunga iho, te haumi a te kāwanatanga.

### Kaiwhakarato Rangahau

Ka rerekē pea te whakauru mai o Ngā Wāhanga me te urupare atu ki Ngā Wāhanga ki tēnā kaiwhakarato rangahau, ki tēnā kaiwhakarato hauora. Ka whakamahia Ngā Wāhanga e ētahi kaiwhakarato hei whakahāngai mai i ō rātou ake whāinga rangahau ki ēnei Whāinga mō te ahumahi whānui, ā, hei tautou rānei i ētahi kōwhao rangahau. Ka āta tonu pea ētahi kaiwhakarato rangahau, hauora anō hoki i ngā kairangahau kia whakaarohia ake ētahi Whāinga e hāngai pū ana i ngā wā e waihangatia mai ana ngā tonu rangahau, e whakarite ana i ngā tonu pūtea, ā, i ngā wā e pūrongoia ana ngā hua o ā rātou rangahau hoki. Ka taea e ngā kaiwhakarato hauora Ngā Wāhanga te whakamahi kia pai ai te whakamātāmua mai i ngā wāhanga rangahau e hiahitia ana i roto i ngā rangahau ratonga hauora, arā, i ngā wā e kimi ana kia mahi tahi ki ētahi kaituku pūtea rangahau, ki ētahi kaiwhakarato kē atu rānei, ki te hapori rānei.

### Kapa Rangahau

He tauira whai hua Ngā Wāhanga mā ngā kapa rangahau i ngā wā e waihangatia mai ana rātou i ngā whakaaro rangahau me ngā tonu haumi, e whakamahi ana i te reo me ngā whāinga e mōhiotia ana e te katoa o ngā rōpū kaituku pūtea rangahau hauora kāwanatanga.

### Ngā Hapori

He tauira Ngā Wāhanga hei whai mā ngā hapori i ngā wā e hāpai ana rātou i ngā kaupapa rangahau, i ngā wā e whai wāhi ana rānei rātou ki ngā mahinga tahitanga ā-rangahau. Ko tā Ngā Wāhanga he poipoi i te mahi tahitanga i waenganui i ngā kaiwhakarato rangahau, hauora hoki me te hapori, e ū ai te whakaaro kia noho mātāmua mai te tangata i roto i te pūnaha hauora. Ka whai hua hoki ēnei Wāhanga hei rauemi mā ngā hapori e whakahaere ana i ā rātou ake mahi rangahau.

# Wāhanga 1: Te hauora o te tangata, te whānau me te hapori



## Whānuitanga:

- + He waihanga mātauranga hei whakatairanga i te hauora me te waiora o te takitahi me te hapori.
- + He tūhura i te pāhekoheko a te koiora, papori, ahurea, taiao hoki e whai pānga ai ki te waiora ināiane, i te roanga o te oranga, me ngā rā kei mua i te aroaro anō hoki.
- + He whakaputa i ngā auahatanga me ngā parenga e whakatinanahia ai te whakapikihia o te hauora me te waiora.
- + He whanake i ētahi ara hou ki te parepare, te whakakite, te tātari me te whakaora i ngā mate ā-hinengaro, ā-tinana hoki, otirā, he matapae i te ara whakamua, te taumata me te pāpānga o te māuiui.

## Ngā Whāinga Rangahau

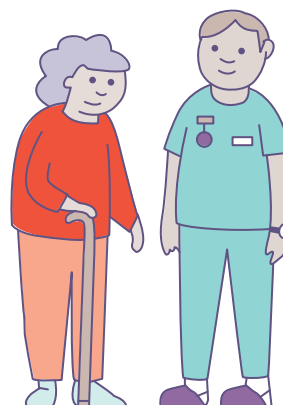
- a. He whakawhānui i ō tātou mōhiotanga ā-hauora, ā-mate hoki ki te tinana me te hinengaro mā te whakamahi i ngā taonga ka hua mai i te mātauranga Māori, te hauora o te hunga tūmatanui me ngā rautaki rongoā koiora.
- b. Kia mārama ki ngā take e hua ai te hauora me te waiora me te pāhekoheko o ēnei mea ināiane, hei te rere o te wā me ngā whakareanga e haere ake nei ki te whakariterite i te āhua o ngā hua ki te tangata, te whānau, te hapū, te iwi me te hapori.
- c. He mahi tahi ki ngā hapori ki te waihanga tahi i ētahi rautaki parepare e piki ai te hauora me te waiora ā-tinana, ā-hinengaro hoki.
- d. He whakaputa i te mātauranga me ngā auahatanga e hāngai ana ki te āwhina i te tangata e pāngia ana e tētahi mate mauroa, e tētahi mate rongoā-kore ā-tinana, ā-hinengaro anō hoki me te tautoko i te katoa kia pai ai ō rātou oranga, kia kaumātua haere ai, kia mate pai ai hoki i roto i ō rātou whare, i ō rātou hapori anō hoki.

## Ngā Whāinga ā-Whakahaere

- a. He tautoko, he whakarite pūnaha hoki mā ngā kairangahau me ngā hapori ki te hono, ki te wānanga i ngā tūmanako me ngā whakaaro, ki te whanake i ngā whāinga rangahau i roto i te kotahitanga, me te tuari mātauranga me ngā hua ka puta.
- b. He whanake, he whakapūmau hoki i te ahumahi rangahau hauora, tae atu rā ki ngā mema ā-hapori e pāngia ana e ngā tauritenga koretanga ā-hauora: hei tauira, te Māori, ngā iwi o Te Moananui-a-Kiwa, te hunga hauā, te hunga manene me te hunga SOGIESC (Anganga Hōkaka, Tuakiri ā-Ira, Taera Hōkaka hoki).
- c. Whakakaha i ngā pūnaha e tautoko ana i ngā kairangahau ki te kōkiri i ngā tūhuratanga i te ara ki te pāpānga, he tautohu, he whakaratarata hoki i ngā kaiwhakamahi me ngā kaiwhiwhi i ngā tūhuratanga o te mātauranga.
- d. He whakaū i te whai wāhitanga atu a ngā kairangahau o Aotearoa ki ngā rauemi tika e tutuki ai te rangahau o ngā rā o tēnei ao, i te wā tika, ā, e hāngai hoki ana ki ngā whakahaere e whakamahia ana e te ao whānui.



## Wāhanga 2: Hauora ā-Tāngata



### Whānuitanga:

- + He whakakaha i ō tātou ratonga hauora, hauā hoki (tae atu rā ki ngā ratonga hauora ā-hinengaro) me te whakapiki i tōna pai, i tōna tere me tana toronga hoki.
- + He poi-poi i tētahi pūnaha hauora e aro ana ki te tangata ki te mātauranga me te whakatinana i te hauora me te waiora, tae atu rā ki te wāteatanga o ngā ratonga e tika ana, te whakatutuki i ngā hiahia me te whakaaweawe i a rātou kia tutuki te hauora pai.
- + He whakawhiti i ngā whakaaro me ngā tūhurātanga hei kohurātanga, hei whēkitenga, hei whakamahutanga, hei kauparetanga e aro pū ana ki te manaakitanga o ngā tūrora me te kapo hoki i te wāriu ā-ohanga ki Aotearoa.

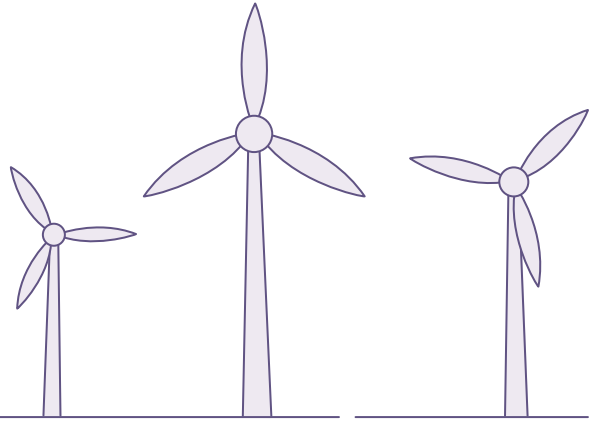
### Ngā Whāinga Rangahau

- a. He tuku i te māramatanga e piki ai ngā ratonga hauora, hauātanga anō hoki e tika ai te whakamahia o ngā rauemi.
- b. He whakawhiti i ngā tūhurātanga hou hei hangarau, hei utauta, hei whakamahutanga, hei parenga hauora, āwhina hoki, ka whakapiki i te hauora i Aotearoa me te ao whānui hoki.
- c. He whakatauhokohoko i ngā auhatanga rangahau hauora ki te whakahohoro i te whai wāhitanga atu o ngā iwi o Aotearoa ki ēnei āhuatanga me te pupuri mai i ngā hua mō tō tātou ōhanga.
- d. He whakamahi i ngā whakamātautanga ā-hauora matarau ki te whakapiki i te whakamahutanga o te hauora me te whakateretere i ngā urupare mā ngā iwi o Aotearoa.
- e. He urutau i ngā ratonga kia hāngai ai ki ngā hapori mā te mārama ki ngā tirohanga huhua, ngā horopaki papori, ahurea, hītori hoki kei muri, me ngā tauritenga kore ka pā ki ngā iwi e pēhia ana.
- f. He whakapiki i te mōhiotanga hauora o ngā iwi katoa o Aotearoa, ahakoa te pakeke, ahakoa te horopaki.

### Ngā Whāinga ā-Whakahaere

- a. He waihanga, he whakaū hoki i te āheinga rangahau hauora me te mātauranga mō te Māori, ngā iwi o Te Moananui-a-Kiwa me te hunga hauā me te whakaū i te whakaaro e hāngai ana ngā mahi a te rāngai rangahau ki te whānuitanga o ō tātou hapori.
- b. He waihanga, he whakaū hoki i tētahi rāngai rangahau hauora ki te whakapiki ratonga hauora me te tiaki, te tautoko i te whakatinanatanga mai o te rangahau me te whakapoapoa me te pupuri hoki i ngā rata kounga ki Aotearoa.
- c. He waihanga, he whakaū hoki i tētahi rāngai rangahau hauora me ngā ratonga hei tautoko (tae atu rā ki ngā matatika) ki te whakahaere i ngā whakamātautau hauora i ngā whare hauora maha, i ngā whenua maha.
- d. He tautoko i ngā whakahaerenga whakarato hauora ki te whakapiki i ngā mahi rangahau hauora me te whakarite i te taiao tika mō ngā ngā kaimahi ki te whai i te mahi rangahau me tētahi rautaki e whai ana i te taunakitanga ā-wheako ki ngā mahi manaaki.
- e. He maimoa, he penapena hoki i te whakatinanatanga mai o te mātauranga i te ahumahi hauora me te whakatairanga i te mahi tahitanga a ngā kairangahau, ngā kaiwharite kaupapa here, ngā kaikōkiri me ngā kaiwhakamahi ratonga e pai ai te tauwhitiwhiti whakaaro, taunakitanga anō hoki.
- f. He whakapiki i te tokomaha e taea ai ngā mahi whakaputa hauora, rangahau ratonga hauora hoki, otirā ngā arotakenga utu-tika i Aotearoa nei, tae atu rā ki ngā tohunga whakangungu i ngā kaiōhanga hauora.
- g. He whakaū i te whai wāhitanga mai o ngā kairangahau ki tētahi pūnaha tauhokohoko kounga.

## Wāhanga 3: Te whakatutuki i ngā āhuatanga o tēnei ao hurihuri



### Whānuitanga:

- + He whai kia tutuki ngā wero o tō tātou ao, o tō tātou whenua hoki e pā ana ki te āhuarangi, te whanake haere o tō tātou taupori, ngā kapatau o anamata me ngā raru mate urutā, mate pākaha hoki.
- + He honohono ki ngā mahi rangahau ā-ao hei urupare ki ngā kapatau hauora, waiora anō hoki me te kōkiri, ako hoki i ngā puna mātauranga rangahau hauora taketake.

### Ngā Whāinga Rangahau

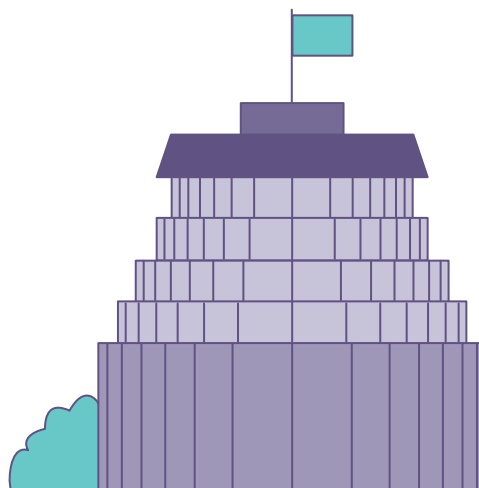
- Kia mārama ki ngā pānga o te āhuarangi me te takahitanga o te taiao ki te hauora me te waiora o ngā iwi o Aotearoa me ngā kirirarau o Te Moananui-a-Kiwa me ōna hoa noho takiwā hoki, me te whakaū i te māramatanga me ngā auahatanga e taea ai te whakatikatika ngā tūraru hauora ka puta i ngā kapatau pēnei i te maikiroa taiao, te parahanga, te mimiti wai me te haumarutanga kai.
- Kia mārama ki ngā pānga ki tō tātou taupori nā te panoni haere o te matahuatanga, te matenga, te māuiui, te hauātanga, me te manenetanga me te whakaū hoki i te māramatanga, ngā pūnaha me ngā auahatanga e tika ana ki te taunaki i tētahi oranga pai, rangatira hoki, i te oranga whirinaki rānei, mō ngā hapori katoa ā ngā rā kei tua.
- He whakamahi i ngā hangarau hou, he whakawhānui hoki i te māramatanga ki ngā take ā-taiao ka pā ki te hauora e hauora ake ai ngā kāinga, ngā hapori me ngā wāhi mahi.
- He tautoko i ngā tikanga Māori e pā ana ki te whanaungatanga o te tangata me te taiao, he whanake hoki i te motuhake o tēnei āhuatanga kia tutuki ai te toitūtanga o te taiao me te hauora o te hapori.

- He whakatutuki i ngā kapatau hauora kua puta mai i ngā mate horapa, penei i ngā mate urutā, ngā mate hou kua ahu mai i te kararehe, ngā mate ka ahu mai i ngā ngārara, me ngā māuiui ka whai pānga ki te āhuarangi, tahi me ngā urupare e tika ana ki ēnei kapatau – tae atu rā ki te whanaketanga mai o ētahi rongoā kōhuru moroiti hou.
- He matapae, he whakamahere, he whakapai ake hoki i te pāpānga mai o te whakapiki haere o ngā mate urutā ki ngā ratonga hauora, pāpori hoki.
- He whakaputa i ngā hua e hāngai ana ki UN Sustainable Development Goals me ngā kaupapa ā-ao kua waihangatia mai hei whakatutuki i ngā Whāinga rangahau ki te whanake i te hauora, te waiora me te tino rangatiratanga o ngā hapori taketake.

### Ngā Whāinga ā-Whakahaere

- He tautoko i te hapori rangahau ki te hono, ki te whai koha hoki ki ngā mahi rangahau ā-ao me te whanake, whakamahi me te urutau hoki i ngā māramatanga, auahatanga anō hoki kua waihangatia ki whenua kē atu hei whakamahinga i Aotearoa.
- He whakanui i ngā whai wāhitanga mō ngā kairangahau o Te Moananui-a-Kiwa kei Aotearoa ki te hono, te mahi tahi hoki ki ērā o Te Moananui-a-Kiwa ki te tuari pūkenga me te tuku mātauranga e tika ana ki te whakarite i ngā ratonga kāwanatanga o Aotearoa me ngā taupori i Te Moananui-a-Kiwa mō te nui haere o te manenetanga mai ki te takiwā.
- He tautoko, he whakakipakipa hoki i te auahatanga o te rangahau e hāngai ana ki Ngā Whāinga o runga ake e puta ai tētahi rautaki 'pūtaiao katoa' ki ngā wero kei ngā rā e heke mai ana mā te whakamahi i ngā pūkenga me te mātauranga i ngā kaupapa kāore e tino whai hāngaitanga ki te rangahau hauora.

## Wāhanga 4: Te mahi tahitanga a te kāwana me ngā pūnaha



### Whānuitanga:

- + He pīkau i te haepapa o ngā pāpānga, te arotake, te angitu me ngā matatika o ngā ture, ngā mahi me ngā tukanga whakataua a te kāwanatanga e hāngai ana ki te hauora me ngā take papori i Aotearoa.
- + He whakaū i ngā pūnaha me ngā whakahaere ā-motu e tika ana ki te kōkiri i te rangahau hauora e ū ana ki ngā matatika, te kounga, te auaha, whai pāpanga hoki i Aotearoa, me te pānu i ngā tūhuratanga kia whānui i roto i te tika, me te whakapoapoa, whakangungu, pupuri hoki i ngā toki kairangahau hauora.

### Ngā Whāinga Rangahau

- a. He mārama, he arotake hoki i te pāpānga o ngā ture, kaupapa here, me ngā paparenga a te kāwanatanga ki te hauora me te waiora o ngā tāngata katoa me ngā hapori katoa o Aotearoa.
- b. He mārama ki ngā tūraru me ngā whai wāhitanga o te pūmahara horihori i roto i ngā mahi tiaki hauora.
- c. He urupare i ngā take matatika e hāngai ana ki te whakamahi me te rironga mai o ngā raraunga ā-tangata mō te rangahau hauora, arā, ko ērā e hāngai ana ki te whakamahinga o ngā huinga raraunga pēnei i te Integrated Data Infrastructure (IDI).
- d. Kia mārama ki ngā take matatika whānui e hāngai ana ki te whanaketanga me te whakamahinga o ngā hangarau hou me te whai wāhitanga ki ngā whakamahutanga hou hei ārahi i ngā whakataua.
- e. Kia mārama, kia arotake hoki i ngā pāpānga kei tua ka hua mai i Ngā Mahi 10 kua whakarārangitia mai ki te NZHRS me te pai o te hāpai i te whāinga matua, arā: “Hei te tau 2027, ko Aotearoa kei te taumata tiketike o te ao i ngā mahi rangahau hauora me ngā pūnaha auaha, ā, kia whakapiki ai i te hauora me te waiora o ngā iwi o Aotearoa, mā te rangahau kounga.

### Ngā Whāinga ā-Whakahaere

- a. He whakautu i ngā take e pā ana ki te tokomaha me te āheinga ā-motu e hāngai ana ki ngā pūkenga o te ōhanga hauora, te whakamahi o ngā raraunga nui, ngā hangarau hou e puta ana me ngā tukanga rangahau hou.
- b. He poipoi i tētahi ahumahi rangahau hauora kaha mā te opeope i te whakareanga kairangahau hauora hou, he whakarato tautoko, whai wāhitanga hoki i roto i tēnei huarahi me te whakapoapoa, te pupuri hoki i ngā tino kairangahau hauora, rata hoki ki Aotearoa.
- c. He whakautu i ngā take matatika e hāngai ana ki te rirohanga o ngā raraunga ā-tangata me tana whakamahinga, tana tūkinotanga rānei.
- d. He whakarato i ngā whakahaere e tika ana kia eke ai te rangahau hauora ki ngā taumata pūtaiao, matatika hoki e tika ana, ā, kia eke hoki, ki te taumata e taea ana, ā mātou tukanga arotake rangahau, kia tika hoki ngā whakaaetanga me ngā hapa, kia māmā, kia tere hoki.
- e. He whakaū i te tuaritanga me te mārakeraketanga o ngā raraunga whānui o te haupūrangā rangahau hauora, me te tuku hoki i ōna hua kia horapa ki ngā kaituku pūtea me ngā huinga whai pānga ā-motu, ā-ao hoki – e urupare ana i ngā take tuku, pēnei i te whakaputa kaupapa here puta noa i Aotearoa me te whai wāhi ki ngā huinga raraunga rangahau.

# Ngā Mātāpono Rangahau Hauora

E whakamātāmua ana i ngā mātāpono matua e rima o te rangahau hauora me te whakamārama i ngā tūranga me ngā haepapa o ngā tāngata e whai wāhi ana.

## He aha Ngā Whāinga Rangahau?

Ko te wāhanga tuarua o te mahere whakamātāmua ko Ngā Mātāpono Rangahau. Mā enei e whakatau te āhua o te whakahaere rangahau i Aotearoa, mā te whai whakaaro ki te motuhaketanga o te horopaki me ngā take me ngā whakaarotau kua whakaritea kētia e te kāwanatanga.

## Ka pēhea te whakamahi i Ngā Mātāpono Rangahau Hauora?

Kua whakamāramatia katoatia ngā mātāpono ki te whārangi 14–18, tae atu rā ki ngā mahi me puta i ngā kaituku pūtea rangahau, ngā kaiwhakarato rangahau me ngā kapa rangahau. Hei tā tēnei mahere me whai te katoa e tono ana i te tahua rangahau a te kāwanatanga i Aotearoa kia uru mai ngā mātāpono nei. Heoi anō, ko te hōhonutanga o te ruku ki ngā mātāpono kei te āhua o te kaupapa. Hei tauira, mō ngā whakawhiwhinga whanake mahi, te tūturutanga me ngā mātaitanga whānui, e mōhio ana ngā kaituku pūtea e kore pea e tutuki ngā whāinga katoa. Ehara i te mea e taea ana e ngā kaitono tahua iti te huri tuarā ki ngā mātāpono, engari kē ia me whakatau e rātau he aha ngā āhuatanga e taea ana, e tika ana hoki, me tuku hoki i ngā rōpū tuku pūtea e tonoa ana kia arahi i a rātau. Me whakamārama e ngā rōpū tuku pūtea ngā herenga i ia kaupapa.

Me whakahāngai e ngā kaituku pūtea rangahau ā rātau tukanga aromatawai rangahau kia kuhu mai ngā mātāpono e rima. Me whakahāngai mai hoki e ngā kaiwhakarato rangahau me ngā kapa rangahau e ai ki ngā āhuatanga motuhake o ia mātāpono. Kua whai wāhi mai hoki te ngāwaritanga ki tēnei wāhanga o te mahere, ā, kei reira hoki ētahi paearu tāpiri mō 'ngā wāhi e tika ana'.

Nā ngā mātāpono, ka puta ko tētahi huarahi pēnei: me whakaū mēnā me rangahau tētahi kaupapa ki Aotearoa; me whakaū hoki kua waihangatia mai, kua whakaputaina hoki i roto i te wairua e hāngai ana ki Te Tiriti o Waitangi; me 'kounga'; he pitomata hoki tōna kia puta he hua; ā, e mārakerake ana te kitea o te mana taurite ā-hauora.

## Me mahi rānei ki Aoteroa?

He whānui ngā paearu ki te whakatau mēnā rānei me mahi te rangahau ki Aoteroa, ā, mēnā hoki me tautoko e te tahua kāwanatanga. Mēnā kāore te mahi rangahau e hāngai ki tētahi o ēnei paearu, me te tautoko e tahua kē atu ehara i te tahua rangahau hauora e whakahaerehia ana e te kāwanatanga.

## Mana Tāngata

Ko te hiranga o tā te mātauranga Māori ahuahu, whakaū hoki i te tōnuitanga o tō tātou whenua hei ngā rā ki tua tētahi o ngā whakaaro matua o tēnei mahere. Ka whai wāhi mai ngā tukanga kaupapa Māori ki te whakamāramatanga o te rangahau kounga, ā, ko te whakamāramatanga o te hauora, ko ōna tūāpapa e kitea ana i te tauira o He Korowai Oranga<sup>3</sup>, ā, ka kuhu mai hoki ko te:

+ Mauri ora: te ora o te takitahi

+ Whānau ora: te ora o te whānau

+ Wai ora: te ora o ngā taiao.

He whai wāhitanga tēnei mā te rangahau hauora i Aoteroa ki te kōkiri i te ao Māori mā te pupuri me te maimoa i ngā mōtika, te tirohanga me te mātauranga, ngā tikanga Māori, me te wherawhera i te tauritenga koretanga.

He nui ngā ara e taea ai te kōkiritanga o te hauora Māori mō te whānau, te hapori me ngā whakahaerenga: mā roto i te whakawhanaungatanga; mā te whanaketanga o te mātauranga e hāngai ana; mā te panoni haere o ngā ratonga hauora, kaupapa here rānei; mā te whakakaha i te rāngai mahi o te rangahau hauora me ōna kaiarahi; ā, mā te whakapai i te hauora me te mātauranga rangahau hauora.

Ko te whanaungatanga pai i waenga i ngā kairangahau hauora me te Māori, koirā ko te mahi tahi i tua atu i te angawā o tētahi kaupapa rangahau, hui rānei. Ka pai ake te rangahau mēnā ka whai wāhi atu te iwi, te hapū, te whānau, me ētahi atu hapori Māori ki te rangahau hauora me te whakapiki i ngā hua hauora mō te Māori, otirā, mō ngā iwi katoa o Aoteroa.

3 <https://www.health.govt.nz/our-work/populations/maori-health/he-korowai-oranga>

## Te Kounga

E koke whakamutua ai te hauora me te waiora o te tangata e te pūnaha rangahau hauora me tautoko tonu, me maimoa hoki tātou i te rangahau kounga. E kounga ai te rangahau me 'ū ngā tūkanga, ā, me ū hoki te pūtaiao'. Mā te rangahau kounga e tautohutia ai ngā kōhao, ā, he tika, kua pai te whakatutuki, te pūrongo hoki o te rangahau. Mā te whakamātāmua i te rangahau kounga, ka iti iho te rangahau kore whai hua, ā, ka hua mai ko tētahi pūnaha pai hei urupare i ngā pātai hauora e hiahia ana te tangata ki te mōhio.

Mātua rā ko te kounga i ngā mahi rangahau katoa, nā te mea e kore te māramatanga e hiahia ana ki te whakapiki i te hauora me te waiora o te tangata e hua mai ai i te rangahau hapahapa. Ka whai wāhi mai te 'pai o te whakatutuki me te pai o te pūrongo' o te rangahau ki te whakaiti i te nui o te rangahau hapahapa nā te tāruatanga rānei, nā te hē rānei o te tātari i ngā hua.

## Pāpānga

Ko tā tēnei mahere whakamātāmua he whakakaha i ngā kapa rangahau ki te whakamahi i ō rātou tohungatanga me tō rātou auahatanga ki te tautohu me te hīraurau take, me te whakaū i te pāpānga pai rawa ka puta i tērā rangahau.

Ko tā te mātāpono Pāpānga he whakakipakipa i ngā kairangahau nō ngā wāhanga katoa, kei ngā taumata katoa hoki o te whanake rangahau ki te tautohu me te whakaū i ngā pāpāngā e nui ake ai ngā whai wāhitanga o ngā pāpānga o ā rātou mahi. Me waha e ngā kairangahau katoa te ara hei kokenga kei tua i te huarahi pāpānga. E hāngai tonu ana tēnei ki ērā e whai ana i te pūtaiao tūhura.

Mā ngā kaiwhiwhi i te rangahau e: tautohu ngā pātai me ngā take rangahau, ā, me whai wāhi atu ki ngā wāhanga katoa o te rangahau hauora i te roanga ake o ngā mahi, i ngā wāhi e tika ana.

## Pūtaiao tūhura hei tūāpapa mo ngā pāpānga

Ka whāngai te pūtaiao tūhura i te auahatanga, ā, ko ngā tūāpapa ēnei mō te rangahau arotahi, arā, hei whakapiki i tō tātou tūranga ā-ao me te hono ki ngā kaupapa rangahau hauora ā-ao hoki. E hāngai ana te tūhura ki ngā rangahau hauora katoa, tae atu rā ki te mātauranga taketake.

Ko ngā putanga o te rangahau he pōhauhau, e kore hoki e taea te matakite, ā, e hāngai ana tēnei ki te pūtaiao tūhura. Kei ngā ngahurutanga tau pea te roa kātahi ka puta pea he urupare ki ngā wero hauora. Nō reira, me whai pae tata, pae tawhiti, pae tahatū anō hoki te rangahau i ngā wā katoa. Ko te aronga e whai ana kia tere, kia tūturu anake ngā putanga e kore e whakatutuki i ngā hiahia o Aotearoa.

He wāhanga nui te whakakaha i ngā kapa rangahau ki te whakamahi i ō rātou mōhioatanga, auahatanga hoki ki te kōkiri i te tūhuratanga e hua ai te marea, ā, he wāhanga nui hoki tēnei ki tētahi pūnaha rangahau hauora kounga hoki. He wāhanga matua te rangahau hauora ki ngā pūnaha auahatanga a Aotearoa.

## Ko te whakararata me te whakakaha hapori tētahi āhuatanga matua ki te whakatutuki i ngā hua.

Mātua rā ko ngā hapori hei whakatinana mai i te moemoeā o NZHRS mō te rangahau hauora. Kua waihangatia mai tēnei mahere whakamātāmua i te whakaaro e kore e tau noa atu te māramatanga rangahau me te tūkanga rangahau ki te kaiwhiwhi. Engari kē ia, e āhei ana te hapori ki te whakahaere rangahau, me te whai wāhi ki te kōkiri i te kaupapa rangahau. E piki haere ana te nui o te rangahau hauora e tautokohia ana e te hapori, e ngā tarahatī ā-iwi rānei, ā, e whakahaerehia ana e ngā kairangahau nō te hapori. Ko te hapori tētahi o ngā hunga whai pānga matua o te rangahau hauora, ā, me whai wāhi ki ia taumata, tae atu ki te āhua o te rangahau me te tūkanga arotake.

## Mana Taurite

E whanake haere ana te papori, e whānui haere ana ā-tuakiri, ā-ahurea, ā-papori hoki. Kāore ētahi o ō tātou nei hapori e whai wāhi ki te tōnuitanga, ā, kua rongo hoki i te tauritenga koretanga i te hauora me te waiora. Ko ngā pānga o te tauritenga koretanga me ngā take pēnei i te tāmitanga he take whakaheke. Ko te mutunga iho ka pāngia nuitia ngā putanga hauora, papori hoki.

E kapi ana i tēnei mahere whakamātāmua ko te whakaaro nui ki ēnei take me ngā tauritenga koretanga ā-hauora e pā atu ana ki ngā rōpū whai pānga. E kapi ana, engari kāore e mutu i konei, ko ngā tauritenga koretanga i ahu mai i te tāmitanga, te tuakiri, te hauātanga, te pakeke, te wāhi me te SOGIESC.

Kua toka te mātāpono 'Mana Taurite'. Ko te tauritenga koretanga ā-hauora tētahi o ngā take nui e pā mai ana ki ngā iwi o Aotearoa ā-mohoa nei.

Me kua te pūnaha rangahau e tuku kia kino kē atu ngā tauritenga koretanga engari kē me whai kia whakakore haerehia. E hiahia ana nuitia ana he rangahau e whakakore haere nei i te taurite koretanga, ā, e pai ana kia panonihia e ngā kaituku pūtea rangahau kia hāngai mai ā rātou tūkanga haumitanga ki tēnei. Me whakaaro, me urupare hoki e ngā kairangahau katoa, ahakoa te wāhanga o te rangahau, te kaupapa rānei, he aha te koha atu o ā rātou rangahau ki te mana taurite ā-hauora hei te pae tata me te pae tawhiti.

## Ko Ngā Mātāpono Rangahau me whakatinana e ngā kaituku pūtea, ngā kaiwhakarato

Mā ngā kaiwhiwhi i te rangahau e: tautohu ngā pātai me ngā take rangahau, ā, me whai wāhi atu



## Aotearoa, he aha ai?

Tuatahi, me mārama tātou ki te take me whakahaere tētahi kaupapa rangahau hauora motuhake ki konei, otira mēnā ka whai hua rānei ki a Aotearoa.

### Ko tā te kaituku pūtea:

He whakaū ka hāngai ngā rangahau ki tētahi, nui ake rānei, o ēnei paearu:

- a. Ka urupare i tētahi take hauora e motuhake ana, e hirahira ana rānei ki a Aotearoa
- b. Ka urupare i tētahi take hauora e motuhake ana, e hirahira ana rānei ki te Māori
- c. Ka whanake ake i tētahi haumitanga kua mana kē mā roto mai i ngā pūtea rangahau hauora a te kāwanatanga o Aotearoa
- d. Ka waihanga i tētahi māramatanga hou ki te papori matatini o Aotearoa me ōna horopaki papori
- e. Ka tautoko i te whanaketanga o ngā kaupapa here e hāngai ana, ngā ratonga me ngā whakamahutanga e tutuki ai te tauritenga ā-hauora
- f. He pitomata ki te whakapiki i te hohoro me te pai o ngā ratonga kāwanatanga i ngā wāhanga o te hauora, papori, ture, taiao me te haumarutanga ā-taiao
- g. Ka whai koha ki te auahatanga e hua ai te ōhanga mā te whakatauhokohoko o te rangahau me te auahatanga
- h. He toitū, he whanake hoki ngā whai wāhitanga motuhake
- i. Ka whanake i te tūranga ā-ao, te mana me te motuhengatanga
- j. Ka whai hua ngā iwi o Te Moananui-a-Kiwa me ngā whenua hoki (e hāngai pū ana ki te taupori o Aotearoa)
- k. Ka hāpai i tētahi wāhanga matua o te hanganga rangahau hauora o Aotearoa
- l. Whakaū kia whakaurua ōkawatia ngā paearu ki te tukanga whakamātāutau rangahau.

### Ko tā te kaiwhakarato rangahau:

- a. Ka whakaū kua ōkawa te kuhu mai a ngā paearu ki te tukanga arotake rangahau.

### Ko tā ngā kapa rangahau:

- a. Ka whakaū kua whai wāhi mai tētahi o ngā hua mō Aotearoa kua rārangi mai ki runga ki ngā rangahau kua tonoa te pūtea kāwanatanga
- b. Ka āta whakamārama ko ēhea ngā paearu e uruparetia ana e tā rātou rangahau, ā, he aha ai.

## rangahau me ngā kairangahau e whai pūtea ai i te kāwanatanga o Aotearoa

ki ngā wāhanga katoa o te rangahau hauora i te roanga ake o ngā mahi, i ngā wāhi e tika ana.

### Mana Tāngata



Kia whakatau rā anō me whakahaere te mahi rangahau i konei, me whakaū tātou ka tika te whakahaerehia mō te horopaki o Aotearoa, arā, ko te ū ki te wairua o Te Tiriti o Waitangi.

#### Ko tā te kaituku pūtea:

(Mā ngā kaituku pūtea Māori rātou anō e whakahaere, i ngā wāhi e tika ana)

He mahi tahi ki te Māori e tika ai te whai wāhitanga mai o ngā mātāpono me ngā paearu whanake Māori i ngā tukanga tuku pūtea. Ā, hei tāpiri ake ki te whakamanatanga o Te Tiriti, me āta mārama i ngā tukanga tuku pūtea te:

- Tautoko marika o te rangahau hauora a te Māori
- Whakatutuki i ngā haepapa ki te urupare i ngā mātāpono o te Mātauranga Whakakite
- Maimoa me te whakautu i te mātauranga Māori, ngā tukanga rangahau me ngā ariā hauora
- Tautoko i ngā whai wāhitanga ki te mahi tahi ki te Māori e piki ai te hauora me te waiora
- Whakaū i te ngāwaritanga o ngā paearu kia mōhiotia ai e whakaaetia ana ngā momo mahi tahi rerekē e ai ki te āhua o te rangahau me ngā tohutohu i takea mai i te tangata whenua
- Mahi tahi ki kaituku pūtea kē atu hei whakahāngai mai i ngā pūnaha me ngā paearu ki te taumata e taea ana i te horopaki
- Mārama o te kōrero ki ngā wānanga whakarato mō ngā aronga me ngā paearu hou, e pai te whakatū pūnaha tautoko.

#### Ko tā ngā kaiwhakarato rangahau he:

(Mā ngā kaiwhakarato Māori rātou anō e whakahaere, i ngā wāhi e tika ana)

- Whakarato huarahi e eke ai te taha ahurea o ngā kairangahau
- Whakaū i te whanaungatanga i waenganui i ngā iwi, i ngā hapū me ētahi hapori Māori kē atu, ki te kuhu mai i ētahi taumahi e pā ana ki te haepapa ki te papori
- Whakahaere i tētahi kaute ā-wānanga ki te aroturuki, ki te whakahaere anō hoki i ngā taumahi rangahau kia kore ai ētahi hapori e taumaha i te rangahau (tirohia Te Mana Taurite).

#### Ko tā ngā kapa rangahau he:

(Mā ngā kairangahau Māori rātou anō e whakahaere, i ngā wāhi e tika ana me te āwhina a te whānau, hapū me te iwi)

- Whakahāngai i ngā mahi ki ngā aratohu e hāngai ai te rangahau ki te mahere haepapa ā-hapori me ngā taumahi kaute hapori Māori
- Whakahaere i ngā whanaketanga ngāio e tika ana ki te rangahau hauora Māori
- Whakahaere hui i ngā wā e tika ana, me te hāngai hoki, tahi ki te hapori Māori ka whai wāhi atu ki te waihangatanga mai, te whanaketanga, te whakahaerenga me aroturukitanga o te rangahau
- Whakaaro ki tō rātou mahi hei rāngai rangahau hauora
- Whakarite i tētahi rautaki tuari mārama, ā, me whai wāhi mai hoki te whakatairangatanga o te whanaketanga hauora Māori
- Tautohu i ngā wāhi e whai wāhi mai ana ngā hapori rangahau taketake o tāwāhi i te rangahau, i kaupapa kē atu rānei.

## Kounga



Ko te mahi e whai ake ana ko te whai kia kounga te rangahau. He tika, he hāngai ki te pūtaiao, he hou, ā, kua pai hoki te waihanga mai, te whakatinana mai me te pūrongo mai, koirā te rangahau kounga. Me whakaaro ake te kounga i mua i ngā take pāpānga me te mana taurite, he kore nō te whakatinana mai o te pāpānga mēnā kua hē, kua kore rānei i kitea he hua.

### Ko tā ngā kaituku pūtea he:

- Whakaū i tētahi tukanga tuku pūtea pai ki te kōwhiri i te tino rangahau mā tētahi hanumitanga o ngā tauira tuku pūtea me te aromatawai e wātea ana i te raru ka pā pea ki te mana o ngā hua
- Whakaū i te tautokona o te rangahau hou, he pitomata kei roto ki te whakatutū puehu ki te kōkiri i te kaha o te motu me te whai wāhi ki ngā tuhuratanga hauora (tae atu ki ngā kaupapa ko te tūāpapa ko te mātauranga Māori)
- Whakamana i te kounga o te rangahau e haere ake ana i te whānuitanga o te auahatanga, mai i te rangahau arotahi māmā – ā puta noa ki te whānuitanga o ngā wāhanga rangahau
- Whakarangatira i te kounga o te rangahau i ngā horopaki maha mā te whakamahi i ngā tukanga mahi rerekē, huhua anō hoki
- Whakarangatira i te wāriu o te mātauranga Māori me ngā tukanga kaupapa Māori me te nui o te hira e tutuki ai te mana taurite me ngā hua ā-hauora pai i Aotearoa
- Mōhio i ōna wā he hou te rangahau kounga, ā, i ōna wā e whanake ana i ngā hua nō tētahi rangahau kounga kua rangahaua kētia i tēnei whenua, i tāwāhi rānei
- Whakamana i te hiranga o te mahi tahi me te whai wāhi mai a te hapori (tae atu ki ngā hunga whai pānga) i ngā mahi waihanga me ngā mahi tuku pūtea rangahau

- Whakauru mai i ngā hapori, kairangahau me te hunga whiwhi ki tētahi tukanga whakarite whāinga matua, aromatawai hoki, i ngā wā e tika ana
- Whakahaere i ētahi arotakenga, e whaiwhai hoki i ngā taunakitanga o te hiahia me te tautoko i te hapori mō ngā kaupapa rangahau ki te whakamōhio i ngā whakatau tuku pūtea.

### Ko tā ngā kaiwhakarato rangahau he:

- Whakaū i te mōhio o ngā kairangahau ki tēnei mea te rangahau kounga me te whai wāhitanga o ngā momo whakangūngūtanga e tika ana ki te whakarite i tētahi tono mō te tahua a te kāwanatanga.

### Ko tā ngā kapa rangahau he:

- Whakahaere rangahau kua tika te waihangatia mai, te whakatinanatia mai, te pūrongoatia mai, me te whakarite i ētahi atu e tohunga ana ki te whakatutuki i tēnei mahi i ngā wā e tika ana
- Hono, he mahi tahi hoki ki te motu, me te ao ki te tuari i te māramatanga, te whai pūkenga, me te whai wāhi ki ngā taputapu, ngā whare me ngā whai wāhitanga kāore i Aotearoa
- Kimi whai wāhitanga ki te tuku mahi me te whakangungu i te reanga kairangahau kounga hou
- Whakaaroaro ki te urutau i ngā tukanga kua whanake i tāwāhi mō te horopaki o Aotearoa.





## Pāpānga

Kia whakatau rā anō he kounga te rangahau, me aro ngā whakatau tuku pūtea ki te pitomata o ngā pāpānga. He panonitanga ā-tangata, ā-papori, ā-ōhanga, ā-oranga taiao te pāpānga, whānui ake i ngā tukunga ā-mātauranga, ā-pūkenga hoki. Me aro pū atu ngā kaituku pūtea me ngā kairangahau ki ngā pāpānga ka puta kia whakatau rauemi rangahau hauora ana.

### Ko tā ngā kaituku pūtea he:

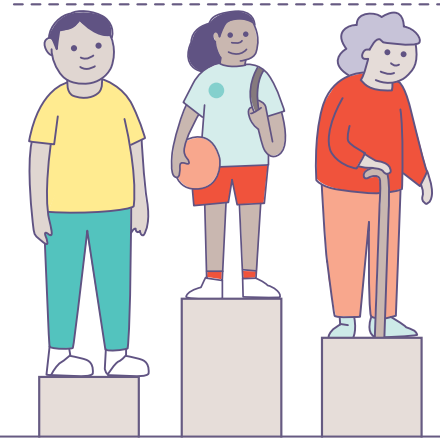
- Kī ake ki ngā kaitono putea katoa kia whakaahuatia ngā kokenga i te huarahi pāpānga ā muri ake i ā rātau mahi
- Āta whakamārama ehara i te mea me aro pū atu te pāpānga ki te hunga whiwhi, ki te taiao rangahau māketē rānei. I ētahi rangahau, ka koke wawe i te ara pāpānga me te whakaputa i ngā hua ki a Aotearoa – pēnei i te whanake pūkenga me te rāngai mahi rangahau
- Whakamōhio, he whakaratarata hoki i ngā kairangahau ki te kuhu ki ngā kaupapa me paparenga kua waihangatia kia puta ai te pāpānga
- Whakawhānui, kua e tārua, ngā ratonga me ngā hōtaka e whakaratohia ana e rōpū kē atu
- Whakatairanga i te hiranga o te auahatanga me te tūhuratanga hei pāpānga ki te anamata
- Whakaū i tētahi aronga whai kaha e pā ana ki te hauora me te paparenga
- Kimi huarahi ki te mahi tahi ki ētahi atu kaituku pūtea ki te whakanui i ngā hua i ngā haumi, arā ko ērā i waenganui i ngā kaituku pūtea rangahau ā-hapori, ā-kāwanatanga
- Whakatenatena kaitono ki te āpiti mai i te arotake ki ngā mahi rangahau, e kitea ai ngā taunakitanga o te wāriu me te whakapikinga o ngā mahi.

### I ngā wā e tika ana, mā ngā kaiwhakarato rangahau e:

- Whakatairanga te hiranga o te hapori ki te kōkiri rangahau me te whakakipakipa i ngā kairangahau ki te mahi tahi ki ngā hapori ki te tautohu, ki te whanake me te whakahaere i ā rātau mahere rangahau
- Poipoi me te whakakipakipa i te mahi tahi ki ngā rōpu o tāwāhi me te whai koha ki ngā whakahaerenga me ngā pāpānga rangahau ki tāwāhi.

### Ko tā ngā kapa rangahau he:

- Mahi tahi ki ngā hōtaka me ngā kaupapa kua waihangatia ki te para i ngā huarahi kia puta ai he hua
- Whakaaro ki ngā hua kei tua, te mahinga rānei o te rangahau me ngā huarahi e piki ai te rangahau mā te panoni tauira, tae atu ki te waihanga tahi
- Hono ki ngā mātanga rangahau mēnā kāore ō rātou tohu rangahau ōkawa, e tika ai ngā hua o te rangahau ā-hapori, e puta ai ngā mahi me ngā paparenga
- Whanake te rangahau kounga kua puta kē ki te whakawhānui i ngā hua o ngā haumi me ngā tūhuratanga o mua.



## Mana Taurite

Ko te wāhanga whakamutunga, ko te whakamahi i tētahi rautaki mana taurite e pā ana ki te rangahau hauora ki te whakaū, i tōna tino itinga, kia kua ngā tauritenga koretanga e nui ake i te whakahaeretanga o te rangahau. Ko tā Te Manatū Hauora whakamahuki i te mana taurite: “I Aotearoa, kei reira ētahi rerekētanga ā-hauora e tino taea ana te papare, ā, kāore hoki i te tika. Ko tā te mana taurite he whakarangatira i ngā tāngata rerekē, he rerekē hoki ngā mahi me ngā rauemi hei āwhina, hei whakatutuki hoki i ngā hua hauora e taurite ana”.

### Ko tā ngā kaituku pūtea he:

- Whakamana i te whakaaro ko te mana taurite hauora tētahi o ngā kaupapa matua ki Aotearoa nei ā, ka pēnei tonu mā NZHRS ā haere ake nei
- Whakaū ki ngā kaitono ki te whakaaroaro ake me te whakaahua hoki i ngā hiraunga ka puta pea i ngā hua rangahau mō te mana tauritanga ā-hauora i ngā wā e waihanga rangahau ana
- Kī ake me whai mahere whakatikatika, i ngā wāhi e tonoa ana te rangahau kounga ka nui ake pea ngā tauritenga koretanga ā-hauora
- Whakamātāmua rangahau kounga e whakaheke ana i ngā tauritenga koretanga ā-hauora, mātua rā mō te Māori, mō ngā iwi o Te Moananui-a-Kiwa, te hunga hauā, te hunga e pāngia ana e te mate hinengaro me ngā hapori manene
- I ngā wā e taea ana, me whakarite whai wāhitanga ki te whakangungu mātanga rangahau i ēnei hapori ki te whakapiki i te whai kohatanga ki te wheako ā-oranga ki ngā hua rangahau.

### Mā ngā kaiwhakarato rangahau e:

- Mahi tahi ki ngā iwi me ngā rōpū hapori ki te whakarite i tētahi tukanga e taea ai e ngā kairangahau te kōrero tahi me te mahi tahi ki ngā hapori i kōrerohia i te d). Me whakarite e ngā wānanga ētahi kaiārahi me tētahi tukanga whakahaere ki te whakatikatika i ngā tūraru e kore ai e pā kahatia ngā hapori e ngā mahi a ngā rōpū rangahau (tirohia te Mana Tāngata)
- Tautoko, e ārahi hoki ngā kairangahau hauora ki te āwhina i a rātou ki te mahi tahi ki ngā hapori me ngā rōpū rangahau, i ngā wāhi e tika ana.

### Ko tā ngā kapa rangahau he:

- Whai kia whakakore haere i ngā tauritenga koretanga ā-hauora mā te rangahau, i ngā wāhi e tika ana
- Mahi tahi (kairangahau ā-hapori, kairangahau a ngā whakarato) kia mārāma ai ki ngā tūraru motuhake e pā ana ki te hauora me waiora ā-hapori i ngā hapori i tautohutia i te d), ki te kimi i ngā hua e tika ana ki te whanake i ō rātou mōhiotanga me ō rātou mārāmatanga me te whakarato i ētahi whai wāhitanga ki te rangahau
- Whakaaroaro i ngā wā katoa ngā pāpānga anamata ka puta pea i ā rātou rangahau mō te mana taurite i Aotearoa me te āta whakarārangi mai hoki i tēnei ki ngā tonu pūtea.

# Āpitianga 1: Te Whakapapa o te Mahere Whakamātāmua

## He aha i waihangatia ai te mahere whakamātāmua?

I te Hune o 2017, whakaputaina ai Te Rautaki Rangahau Hauora o Aotearoa 2017–2027 (NZHRS). Kātahi anō ka whakakotahi mai te Kāwanatanga i ngā wāhanga o te hauora, te pūtaiao, te rangahau me te auahatanga e hangā mai ai tētahi pūnaha rangahau e kotahi ana te whakaaro, te mahi me te honohono, kia pai ake ai te hauora me te waiora o ngā iwi o Aotearoa.

I raro i te NZHRS e mahi ngātahi ana te MoH, MBIE me te HRC – ki te whakarite i ētahi huarahi hei whakapai ake i te tuku pūtea, te whakahaere me te mahi i te rangahau hauora.

Tekau katoa Ngā Mahi e hāngai ana ki te NZHRS. E whakaputa ana tēnei mahere e ai ki te Mahi 1, 'He whakamātāmua i ngā tukunga pūtea mā tētahi tukanga whakarite wātea.' E kōkiri ana te HRC i te Mahi 1 me te tautoko a MoH me MBIE.

Ko ngā āhuatanga kei raro iho i te Mahi 1, e tuku ana i ngā rauemi e tika ana mā ngā kaituku pūtea rangahau ki te whakaaro ki ngā tukunga pūtea rangahau hauora me te urupare i te kauhanganuitanga, ngā kōwhao mātauranga me ngā wero ā-hanganga.

Me whai whakaaro atu ki te katoa e whai pānga ana, ā, me whakapau kaha hoki ki te mahi tahi e tutuki ai te whāinga i whakatauria ai e te NZHRS. Mā te mahi tahi pēnei, kei te whakarangatira ngā rōpū kāwanatanga i te whakaaro he taonga nui te rangahau hauora mō te āpōpō, ā, ehara i te nama noa iho o te rā nei. Ko ngā hua o te rangahau hauora e whānui kē atu ana i te whakapiki i ngā whakamahutanga me ngā paparenga hauora tūmatawhānui, engari ia he tō mai i hua nui ki te papori whānui. Kua whakaahuatia ēnei hua ki te NZHRS.

[← Hoki ki te tuhinga matua](#)

## He aha te take o te mahere whakamātāmua?

### Kia kotahi ai te whāinga mō Aotearoa whānui

Kotahi hautoru noa o te \$320 miriona a te kāwanatanga kua herea ki te ture<sup>4</sup>. Neke atu i te \$200 miriona i ia tau kei te whakapaua e ai ki ētahi whāinga whānui, rerekē hoki. E mōhiotia whānuitia ana me nui ake te tuku a te kāwanatanga i āna pūtea ki te rangahau hauora, nā konā, kua hirahira kē atu te whakaritenga mai o tētahi tirohanga kotahi hei whāinga mā te katoa.

### Kia pai ake ai te hononga, te whakawhiti kōrero me te whakahaere i waenga i ngā kaituku pūtea

He whānui te taiao rangahau hauora o Aotearoa, ā, kei tōna 16 tahua pūtea e whakahaerehia ana e ngā rōpū kawatanga e ono. He rōpū hoki he paku noa iho te tukutanga pūtea, he rōpū hauora hoki kāore e whai pānga ana ki ngā whakahaere kāwanatanga (NGOs) kāore e kapi mai ana, kei te tuku pūtea ki te rangahau.<sup>5</sup> He whāinga ake, he mahere tuku pūtea ake o ēnei rōpū.

Ko tā te mahere whakamātāmua he whakakotahi i ngā mahi a ngā kaituku pūtea me ngā kaiwhakarite kaupapa here, e kotahi ai te hapori rangahau hauora.

### Kia whakamātāmuhia te rangahau tūmatanui e puta ai ko te kounga ki te katoa

Mā te whakaū kua waihangatia te mahi ki te whakaputa i ngā take matua i te timatanga, e whakaū ana tēnei mahere i te kōkiritanga o te rangahau hauora i Aotearoa, ā, e tautokona ana e ngā iwi o Aotearoa, kia whai hua ai ngā kaiwhakamahi o muri ake nei, e whakakore haere nei i te tāruatanga me te whakanui haere i te pitomata ki te whakatinana.

[← Hoki ki te tuhinga matua](#)

<sup>4</sup> The Health Research Council Act 1990, No 68, Whakahoutanga nō te 7 Tihema 2014.

<sup>5</sup> The National Statement of Science Investment. Ministry of Business, Innovation and Employment, 2015, Te Whanganui-a-Tara.

## Kua pēhea te whanaketanga o te mahere whakamātāmua?

### Te Rōpū Whanake

Kua waihangatia mai e Te Rōpū Whanake te mahere whakamātāmua nā ngā pitopito kōrero i puta ngā i ngā hui ā-motu e toru. Nā rātou i pūrongo atu ki te Rōpū Kōkiri Whakahaere o NZHRS – he komiti kāwanatanga e whai wahi mai ana a MBIE, MoH, Ngā Poari Hauora a-Takiwa, Ngā Whare Wānanga o Aotearoa me Callaghan Innovation. Ka tohutohuhia hoki Te Rōpū Whakahaere e tētahi Komiti Tohutohu ā-Waho, e nohoia ana e tētahi rāngai mātanga nō te whenua nei, nō whenua kē atu anō hoki.

Tekau mā toru ngā mema o Te Rōpū Whanake i kopoua i te tau 2018 nā ō rātou mana, mātauranga, tohungatanga hoki ki ngā ratonga hauora, ngā rangahau hauora rānei, mō ō rātou tirohanga rerekē ki te ao me ō rātou wheako, me tō rātou mōhio ki te whakaaro atamai hei painga mō ngā iwi katoa o Aotearoa. Ko ngā mema ko:

- + Ahorangi Michael Baker
- + Ruānuku Richard Bedford (Heamana Takirua)
- + Ahorangi Vicky Cameron
- + Tākuta Kyle Eggleton
- + Tākuta James Hutchinson
- + Ahorangi Margaret Hyland
- + Rose Kahaki (Heamana Takirua)
- + Philip Patston
- + Ahorangi John Potter
- + Ahorangi Stephen Robertson
- + Ahorangi Linda Tuhiwai Smith
- + Tākuta Dale Bramley
- + Fepulea’i Margie Apa

Kua whakaritea te mahere whakamātāmua mā roto mai i tētahi tukanga e whai ana i te arotake taunakitanga me te wānanga hoki i te wāhanga ahumahi.

## He tātari taunakitanga

I whakahaerehia tētahi arotakenga nui o ngā tuhinga o tāwāhi e pā ana ki te whakatau i ngā whāinga matua mō te tuku pūtea rangahau hauora e tika ai te tukanga whakamātāmua. I tono kōrero hoki i ngā tohunga o tāwāhi kua whai wāhi atu ki ētahi mahi ōrite. Nā ngā pitopito kōrero katoa nei i kohia, i mōhiohia ai te hiranga o te whakarite whainga rangahau hauora tahi me ngā whāinga hanganga hoki. Me te aha hoki, kua wāhi katoa mai i ngā wāhanga katoa o tēnei mahere.

### Uiuinga ā-ahumahi

E toru ngā hui ā-motu kua tū e puta ai te mahere. Ko te hua ko te whanake haere e ai ki ngā arotakenga o te hunga whai pānga. Kei te whārangi ipurangi o HRC ngā kōrero mō:

- + Te tukanga i whakahaerehia
- + Ngā hua me ngā arotakenga o ngā kōrero i puta i ngā hui
- + Ko ngā whakamārama mō ngā whakatau matua i puta, kua whakaputaina e mōhiohia ai ngā nekehanga i te roanga o tēnei mahi.

### Te whakahāngai ki ngā whāinga o te UN

E hāngai ana te mahere whakamātāmua ki ngā mātāpono o te UN i ngā wā e kōrerohia ana ētahi rōpū e taupatu ana ngā whakaaro mō te reo e tika ana kia whakamahia i Aotearoa.

Me te aha, kua whakamahia ēnei kupu e rua:

- + He tangata e pāngia ana e te hauātanga
- + SOGIESC (Anganga Hōkaka, Tuakiri ā-Ira, Taera Hōkaka hoki).

E mārāma ana ki te Rōpū Whakahaere ka hiahia pea ngā hapori ki te whakahāngai mai ki a rātou anō, ki te whakamahi rānei i ā rātou kupu ki ō rātou reo.

### ◀ Hoki ki te tuhinga matua





New Zealand Government